



ELECTRONIC COPY

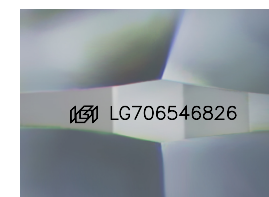
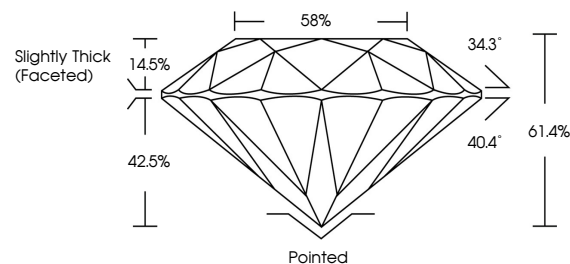
LG706546826 Report verification at igi.org



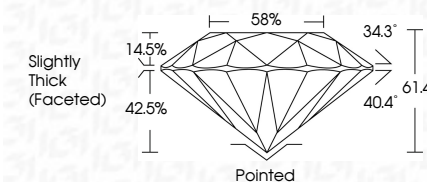
May 10, 2025 IGI Report Number LG706546826 Description LABORATORY GROWN DIAMOND Shape and Cutting Style ROUND BRILLIANT Measurements 11.25 - 11.33 X 6.94 MM GRADING RESULTS Carat Weight 5.56 CARATS Color Grade E Clarity Grade VS 1 Cut Grade EXCELLENT

May 10, 2025 IGI Report Number LG706546826 Description LABORATORY GROWN DIAMOND Shape and Cutting Style ROUND BRILLIANT Measurements 11.25 - 11.33 X 6.94 MM GRADING RESULTS Carat Weight 5.56 CARATS Color Grade E Clarity Grade VS 1 Cut Grade EXCELLENT

PROPORTIONS



Sample Image Used



ADDITIONAL GRADING INFORMATION Polish EXCELLENT Symmetry EXCELLENT Fluorescence NONE Inscription(s) IGI LG706546826

Comments: This Laboratory Grown Diamond was created by Chemical Vapor Deposition (CVD) growth process. Type IIa

COLOR

D E F G H I J Faint Very Light Light

CLARITY

IF WS 1-2 VS 1-2 SI 1-2 I 1-3 Internally Flawless Very Very Slightly Included Very Slightly Included Slightly Included Included

ADDITIONAL GRADING INFORMATION

Polish EXCELLENT Symmetry EXCELLENT Fluorescence NONE Inscription(s) IGI LG706546826 Comments: This Laboratory Grown Diamond was created by Chemical Vapor Deposition (CVD) growth process. Type IIa



IGI



May 10, 2025 IGI Report No LG706546826 ROUND BRILLIANT 11.25 - 11.33 X 6.94 MM 5.56 CARATS E VS 1 EXCELLENT 61.4% 58% Slightly Thick (Faceted) Pointed EXCELLENT EXCELLENT NONE NONE IGI LG706546826 Comments: This Laboratory Grown Diamond was created by Chemical Vapor Deposition (CVD) growth process. Type IIa