



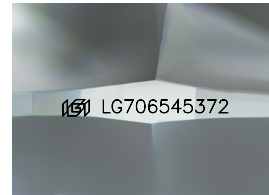
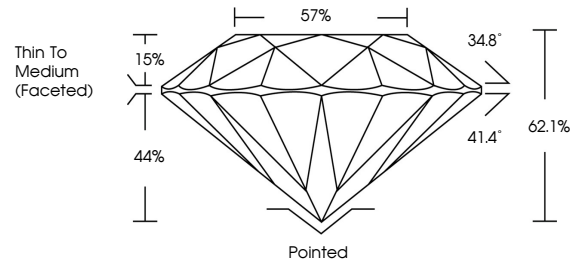
**INTERNATIONAL
GEMOLOGICAL
INSTITUTE**

ELECTRONIC COPY

LABORATORY GROWN DIAMOND REPORT

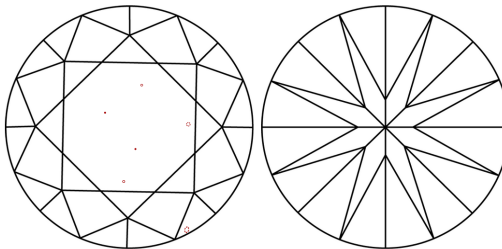
LG706545372
Report verification at igi.org

PROPORTIONS



Sample Image Used

CLARITY CHARACTERISTICS



KEY TO SYMBOLS

Red symbols indicate internal characteristics.
Green symbols indicate external characteristics.

COLOR

D E F G H I J Faint Very Light Light

CLARITY

IF WS¹⁻² VS¹⁻² SI¹⁻² I¹⁻³

Internally Flawless	Very Very Slightly Included	Very Slightly Included	Slightly Included	Included
------------------------	--------------------------------	---------------------------	----------------------	----------



© IGI 2020, International Gemological Institute

FD - 10 20

www.igi.org

LABORATORY GROWN DIAMOND REPORT



May 16, 2025

IGI Report Number **LG706545372**

Description	LABORATORY GROWN DIAMOND
-------------	--------------------------

Shape and Cutting Style **ROUND BRILLIANT**

Measurements 7.71 - 7.80 X 4.82 MM

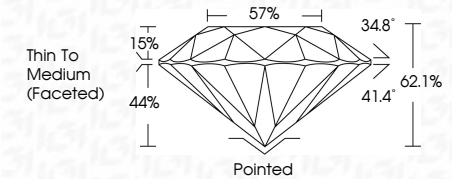
GRADING RESULTS

Carat Weight 1.76 CARAT

Color Grade **D**

Clarity Grade VS 1

Cut Grade **IDEAL**



ADDITIONAL GRADING INFORMATION

Polish **VERY GOOD**Symmetry **EXCELLENT**Fluorescence **NONE**Inscription(s) LG70654537

Comments: This Laboratory Grown Diamond was created by Chemical Vapor Deposition (CVD) growth process.
Type IIa



IGI

May 16, 2025	IGI Report No. LG705645372	1.7% CARAT	D
ROUND BRILLIANT	7.71 - 7.80 X 4.82 MM		
	Color: White	Vs 1	
	Carat Grade	IDEAL	
	Clarity Grade	62.1%	
	Depth	57%	
	Table	Thin To Medium	
	Girdle	(excellent)	
	Culet	Polished	
	Polish	VERY GOOD	
	Symmetry	EXCELLENT	
	Fluorescence	NONE	
	Inscriptions	lgil LG705645372	
Comments: This Laboratory Growth Diamond was created by Chemical Vapor Deposition (CVD) growth process. Type IIA			