



# INTERNATIONAL GEMOLOGICAL INSTITUTE

ELECTRONIC COPY



May 12, 2025

**IGI Report Number** LG706544994  
**ROUND BRILLIANT**  
**LABORATORY GROWN DIAMOND**  
**5.03 - 5.06 X 3.11 MM**  
**Carat Weight** 0.49 CARAT  
**Color Grade** D  
**Clarity Grade** VVS 2  
**Cut Grade** VERY GOOD  
**Polish** EXCELLENT  
**Symmetry** VERY GOOD  
**Fluorescence** NONE  
**Inscription(s)** IGI LG706544994

**Comments:** As Grown - No indication of post-growth treatment. This Laboratory Grown Diamond was created by High Pressure High Temperature (HPHT) growth process. Type II

## LABORATORY GROWN DIAMOND REPORT

May 12, 2025  
**IGI Report Number** LG706544994  
**Description** LABORATORY GROWN DIAMOND  
**Shape and Cutting Style** ROUND BRILLIANT  
**Measurements** 5.03 - 5.06 X 3.11 MM

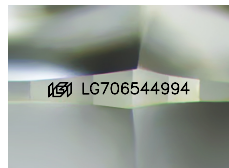
### GRADING RESULTS

**Carat Weight** 0.49 CARAT  
**Color Grade** D  
**Clarity Grade** VVS 2  
**Cut Grade** VERY GOOD

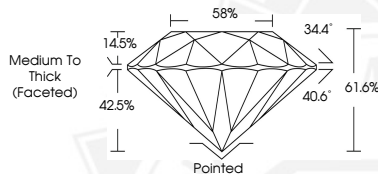
### ADDITIONAL GRADING INFORMATION

**Polish** EXCELLENT  
**Symmetry** VERY GOOD  
**Fluorescence** NONE  
**Inscription(s)** IGI LG706544994

**Comments:** As Grown - No indication of post-growth treatment. This Laboratory Grown Diamond was created by High Pressure High Temperature (HPHT) growth process. Type II



Sample Image Used



May 12, 2025

**IGI Report Number** LG706544994  
**ROUND BRILLIANT**  
**LABORATORY GROWN DIAMOND**  
**5.03 - 5.06 X 3.11 MM**  
**Carat Weight** 0.49 CARAT  
**Color Grade** D  
**Clarity Grade** VVS 2  
**Cut Grade** VERY GOOD  
**Polish** EXCELLENT  
**Symmetry** VERY GOOD  
**Fluorescence** NONE  
**Inscription(s)** IGI LG706544994

**Comments:** As Grown - No indication of post-growth treatment. This Laboratory Grown Diamond was created by High Pressure High Temperature (HPHT) growth process. Type II



THIS DOCUMENT WAS PRODUCED WITH THE FOLLOWING SECURITY MEASURES: SPECIAL DOCUMENT PAPER, INK SCREENS, WATERMARK, BACKGROUND DESIGN, HOLOGRAM AND OTHER SECURITY FEATURES NOT LISTED AND DO EXCEED DOCUMENT SECURITY INDUSTRY GUIDELINES.

For terms & conditions and to verify this report, please visit [www.igi.org](http://www.igi.org)