



**INTERNATIONAL
GEMOLOGICAL
INSTITUTE**

ELECTRONIC COPY

LG706544185
Report verification at igi.org

LABORATORY GROWN DIAMOND REPORT



May 10, 2025

IGI Report Number **LG706544185**

Description	LABORATORY GROWN DIAMOND
-------------	--------------------------

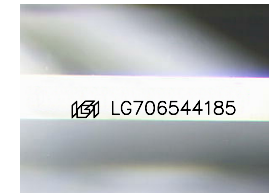
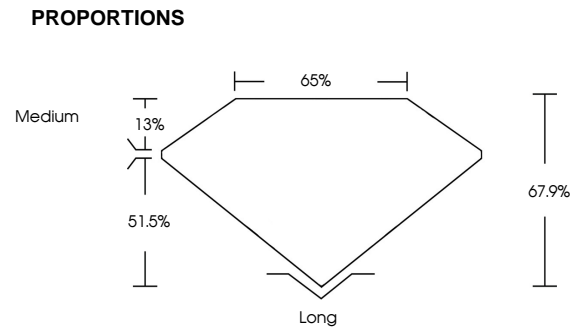
Shape and Cutting Style **EMERALD CUT**

Measurements **7.70 X 5.30 X 3.60 MM**

GRADING RESULTS

Carat Weight **1.42 CARAT**

Color Grade	E
-------------	---

Clarity Grade **VVS 2**

Sample Image Used

COLOR

D E F G H I J Faint Very Light Light

CLARITY

IF WS¹⁻² VS¹⁻² SI¹⁻² |¹⁻³

Internally Flawless	Very Very Slightly Included	Very Slightly Included	Slightly Included	Included
---------------------	-----------------------------	------------------------	-------------------	----------

ADDITIONAL GRADING INFORMATION

Polish **EXCELLENT**Symmetry **EXCELLENT**

Fluorescence **NONE**

Inscription(s)  LG706544185

Comments: This Laboratory Grown Diamond was created by Chemical Vapor Deposition (CVD) growth process.
Type IIa



IGI



© IGI 2020, International Gemmological Institute

FD - 10 20

www.igi.org

THIS DOCUMENT WAS PRODUCED WITH THE FOLLOWING SECURITY MEASURES: SPECIAL DOCUMENT PAPER, INK SCREENS, WATERMARK, BACKGROUND DESIGNS, HOLOGRAM AND OTHER SECURITY FEATURES NOT LISTED AND DO EXCEED DOCUMENT SECURITY INDUSTRY GUIDELINES

May 10, 2025
GI Report No LG706544185
EMERALD CITY

7.70 X 5.30 X 3.60 MM	Carat Weight	1.42 CARAT
	Color Grade	E
	Clarity Grade	VVS 2
	Depth	67.9%
	Table	65%
	Girdle	Medium
	Culet	Long
	Polish	EXCELLENT
	Symmetry	EXCELLENT
	Fluorescence	NONE
	Annotations(s)	4811 (57054118)

Comments:
This Laboratory Grown Diamond was
created by Chemical Vapor Deposition
(CVD) growth process.
Type IIa