



**ELECTRONIC COPY**

LG706540858  
Report verification at igi.org



May 8, 2025

IGI Report Number **LG706540858**

Description **LABORATORY GROWN DIAMOND**

Shape and Cutting Style **ROUND BRILLIANT**

Measurements **9.45 - 9.49 X 5.65 MM**

**GRADING RESULTS**

Carat Weight **3.10 CARATS**

Color Grade **D**

Clarity Grade **VS 2**

Cut Grade **EXCELLENT**

May 8, 2025  
IGI Report Number **LG706540858**  
Description **LABORATORY GROWN DIAMOND**  
Shape and Cutting Style **ROUND BRILLIANT**  
Measurements **9.45 - 9.49 X 5.65 MM**

**GRADING RESULTS**

Carat Weight **3.10 CARATS**

Color Grade **D**

Clarity Grade **VS 2**

Cut Grade **EXCELLENT**

**ADDITIONAL GRADING INFORMATION**

Polish **EXCELLENT**

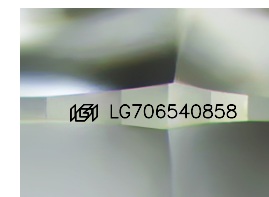
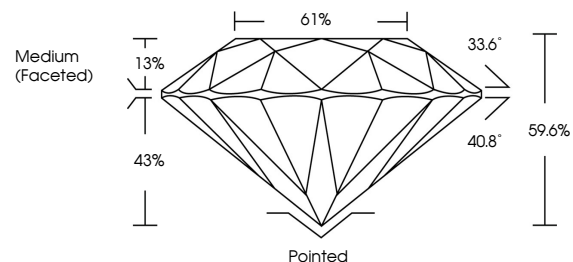
Symmetry **EXCELLENT**

Fluorescence **NONE**

Inscription(s) **LG706540858**

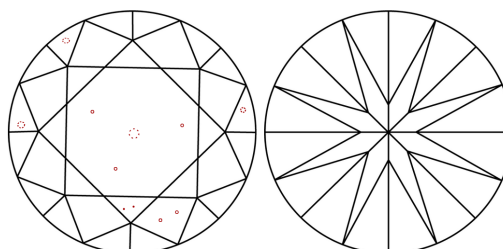
Comments: This Laboratory Grown Diamond was created by Chemical Vapor Deposition (CVD) growth process.  
Type IIa

**PROPORTIONS**



Sample Image Used

**CLARITY CHARACTERISTICS**



**KEY TO SYMBOLS**

Red symbols indicate internal characteristics.  
Green symbols indicate external characteristics.

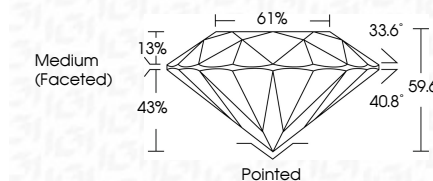
**COLOR**

D E F G H I J Faint Very Light Light

**CLARITY**

IF WS<sup>1-2</sup> VS<sup>1-2</sup> SI<sup>1-2</sup> I<sup>1-3</sup>

Internally Flawless Very Very Slightly Included Very Slightly Included Slightly Included Included



**ADDITIONAL GRADING INFORMATION**

Polish **EXCELLENT**

Symmetry **EXCELLENT**

Fluorescence **NONE**

Inscription(s) **LG706540858**

Comments: This Laboratory Grown Diamond was created by Chemical Vapor Deposition (CVD) growth process.  
Type IIa



**IGI**



May 8, 2025  
IGI Report No LG706540858  
ROUND BRILLIANT  
3.10 CARATS  
D  
3.10 CARATS  
D  
VS 2  
EXCELLENT  
9.45 - 9.49 X 5.65 MM  
59.6%  
61%  
Medium (Faceted)  
Pointed  
EXCELLENT  
EXCELLENT  
NONE  
NONE  
IGI LG706540858  
Comments: This Laboratory Grown Diamond was created by Chemical Vapor Deposition (CVD) growth process.  
Type IIa