



**INTERNATIONAL  
GEMOLOGICAL  
INSTITUTE**

**ELECTRONIC COPY**

## LABORATORY GROWN DIAMOND REPORT

Report verification at [igi.org](https://igi.org)

LABORATORY GROWN DIAMOND REPORT



May 9, 2025

IGI Report Number LG706534069

Description **LABORATORY GROWN DIAMOND**

Shape and Cutting Style **CUSHION MODIFIED  
BRILLIANT**

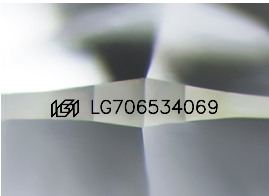
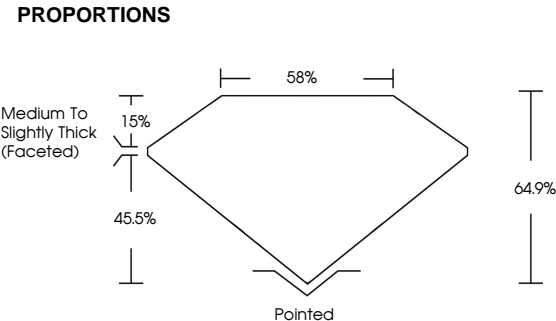
Measurements 7.80 X 5.99 X 3.89 MM

## GRADING RESULTS

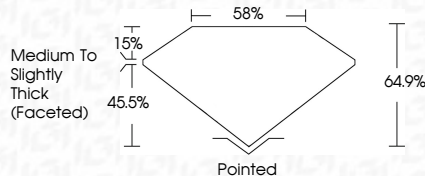
Carat Weight 1.38 CARAT

Color Grade

Clarity Grade VS 1



### Sample Image Used



## COLOR

D E F G H I J Faint Very Light Light

## CLARITY

IF WS<sup>1-2</sup> VS<sup>1-2</sup> SI<sup>1-2</sup> |<sup>1-3</sup>

Internally Flawless	Very Very Slightly Included	Very Slightly Included	Slightly Included	Included
------------------------	--------------------------------	---------------------------	----------------------	----------



© IGI 2020, International Gemological Institute

FD - 10 20



THIS DOCUMENT WAS PRODUCED WITH THE FOLLOWING SECURITY MEASURES: SPECIAL DOCUMENT PAPER, INK SCREENS, WATERMARK, BACKGROUND DESIGNS, HOLOGRAM AND OTHER SECURITY FEATURES NOT LISTED AND DO EXCEED DOCUMENT SECURITY INDUSTRY GUIDELINES



IGI

May 9, 2025	1.38 CARAT D	VS 1	64.9%	89%	Medium to Slightly Thick (Faceted)	Pointed	EXCELLENT	VERY GOOD	NONE	181 LG706534069
GI Report No LG706534069	7.80 X 5.99 X 3.89 MM	Color Grade	Clarity Grade	Depth	Table	Girdle	Culet	Polish	Symmetry	Fluorescence
CUSHION MODIFIED BRILLIANT										Inscriptions(s)
<p>Comments:</p> <p>This Laboratory Grown Diamond was created by Chemical Vapor Deposition (CVD) growth process.</p> <p>Type IId</p>										

**Comments:**  
This Laboratory Grown Diamond was  
created by Chemical Vapor Deposition  
(CVD) growth process.  
Type IIa

**www.igi.org**