



ELECTRONIC COPY

LG706531297
Report verification at igi.org



May 14, 2025

IGI Report Number **LG706531297**

Description **LABORATORY GROWN DIAMOND**

Shape and Cutting Style **ROUND BRILLIANT**

Measurements **6.37 - 6.49 X 3.87 MM**

GRADING RESULTS

Carat Weight **1.00 CARAT**

Color Grade **FANCY INTENSE YELLOW**

Clarity Grade **VS 2**

Cut Grade **VERY GOOD**

May 14, 2025
IGI Report Number **LG706531297**
Description **LABORATORY GROWN DIAMOND**
Shape and Cutting Style **ROUND BRILLIANT**
Measurements **6.37 - 6.49 X 3.87 MM**

GRADING RESULTS

Carat Weight **1.00 CARAT**

Color Grade **FANCY INTENSE YELLOW**

Clarity Grade **VS 2**

Cut Grade **VERY GOOD**

ADDITIONAL GRADING INFORMATION

Polish **VERY GOOD**

Symmetry **GOOD**

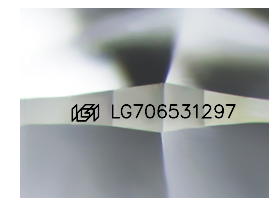
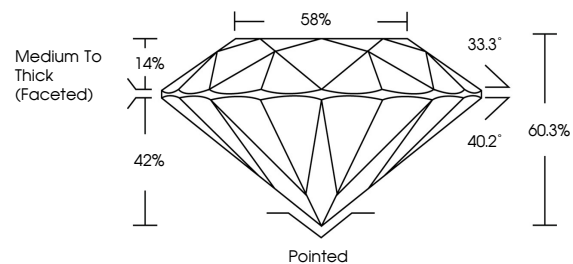
Fluorescence **NONE**

Inscription(s) **IGI LG706531297**

Comments: As Grown - No indication of post-growth treatment.

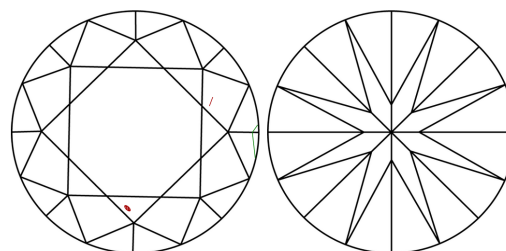
This Laboratory Grown Diamond was created by High Pressure High Temperature (HPHT) growth process.

PROPORTIONS



Sample Image Used

CLARITY CHARACTERISTICS



KEY TO SYMBOLS

Red symbols indicate internal characteristics.
Green symbols indicate external characteristics.

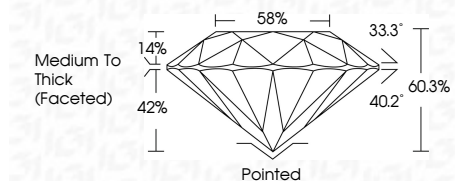
COLOR

D E F G H I J Faint Very Light Light

CLARITY

IF VS¹⁻² VS¹⁻² SI¹⁻² I¹⁻³

Internally Flawless Very Very Slightly Included Very Slightly Included Slightly Included Included



ADDITIONAL GRADING INFORMATION

Polish **VERY GOOD**

Symmetry **GOOD**

Fluorescence **NONE**

Inscription(s) **IGI LG706531297**

Comments: As Grown - No indication of post-growth treatment.

This Laboratory Grown Diamond was created by High Pressure High Temperature (HPHT) growth process.



IGI



May 14, 2025	1.00 CARAT
IGI Report No LG706531297	FANCY INTENSE YELLOW
ROUND BRILLIANT	VS 2
6.37 - 6.49 X 3.87 MM	VERY GOOD
Carat Weight	60.3%
Color Grade	58%
Clarity Grade	Medium To Thick (Faceted)
Cut Grade	Pointed
Depth	VERY GOOD
Table	GOOD
Girdle	NONE
Culet	IGI LG706531297
Polish	
Symmetry	
Fluorescence	
Inscriptions(s)	

Comments: As Grown - No indication of post-growth treatment. This Laboratory Grown Diamond was created by High Pressure High Temperature (HPHT) growth process.