



ELECTRONIC COPY

LG706524889
Report verification at igi.org



May 19, 2025
IGI Report Number **LG706524889**
Description **LABORATORY GROWN DIAMOND**
Shape and Cutting Style **ROUND MIXED CUT**
Measurements **8.87 - 8.92 X 5.62 MM**
GRADING RESULTS
Carat Weight **2.95 CARATS**
Color Grade **FANCY INTENSE PINK**
Clarity Grade **VVS 2**

May 19, 2025
IGI Report Number **LG706524889**
Description **LABORATORY GROWN DIAMOND**
Shape and Cutting Style **ROUND MIXED CUT**
Measurements **8.87 - 8.92 X 5.62 MM**

GRADING RESULTS

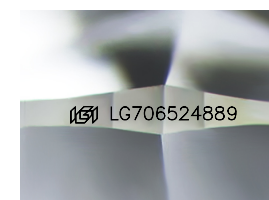
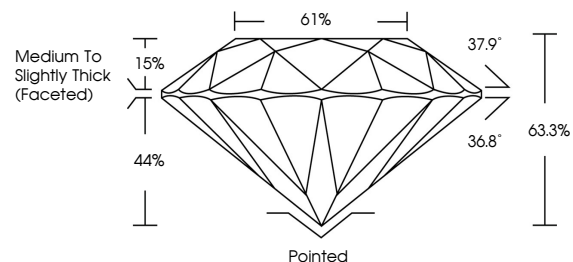
Carat Weight **2.95 CARATS**
Color Grade **FANCY INTENSE PINK**
Clarity Grade **VVS 2**

ADDITIONAL GRADING INFORMATION

Polish **VERY GOOD**
Symmetry **EXCELLENT**
Fluorescence **SLIGHT**
Inscription(s) **IGI LG706524889**

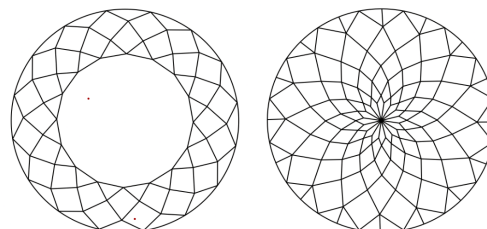
Comments: This Laboratory Grown Diamond was created by Chemical Vapor Deposition (CVD) growth process. Indications of post-growth treatment.

PROPORTIONS



Sample Image Used

CLARITY CHARACTERISTICS



KEY TO SYMBOLS

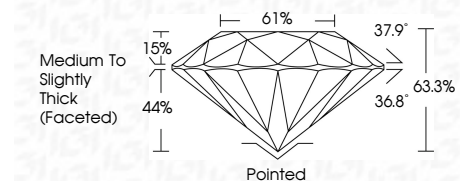
Red symbols indicate internal characteristics.
Green symbols indicate external characteristics.

COLOR

D E F G H I J Faint Very Light Light

CLARITY

IF	VS ¹⁻²	VS ¹⁻²	SI ¹⁻²	I ¹⁻³
Internally Flawless	Very Very Slightly Included	Very Slightly Included	Slightly Included	Included



ADDITIONAL GRADING INFORMATION

Polish **VERY GOOD**
Symmetry **EXCELLENT**
Fluorescence **SLIGHT**
Inscription(s) **IGI LG706524889**
Comments: This Laboratory Grown Diamond was created by Chemical Vapor Deposition (CVD) growth process. Indications of post-growth treatment.



May 19, 2025
IGI Report No LG706524889
ROUND MIXED CUT
8.87 - 8.92 X 5.62 MM
2.95 CARATS
FANCY INTENSE PINK
VVS 2
63.3%
61%
Medium to Slightly Thick (Faceted)
Pointed
VERY GOOD
EXCELLENT
SLIGHT
IGI LG706524889

Comments: This Laboratory Grown Diamond was created by Chemical Vapor Deposition (CVD) growth process. Indications of post-growth treatment.

