



ELECTRONIC COPY

LG706523060
Report verification at igi.org



May 13, 2025

IGI Report Number **LG706523060**

Description **LABORATORY GROWN DIAMOND**

Shape and Cutting Style **ROUND BRILLIANT**

Measurements **7.67 - 7.72 X 4.77 MM**

GRADING RESULTS

Carat Weight **1.75 CARAT**

Color Grade **FANCY VIVID BLUE**

Clarity Grade **VS 1**

Cut Grade **IDEAL**

May 13, 2025
IGI Report Number **LG706523060**
Description **LABORATORY GROWN DIAMOND**
Shape and Cutting Style **ROUND BRILLIANT**
Measurements **7.67 - 7.72 X 4.77 MM**

GRADING RESULTS

Carat Weight **1.75 CARAT**

Color Grade **FANCY VIVID BLUE**

Clarity Grade **VS 1**

Cut Grade **IDEAL**

ADDITIONAL GRADING INFORMATION

Polish **EXCELLENT**

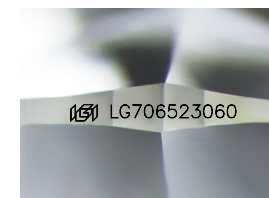
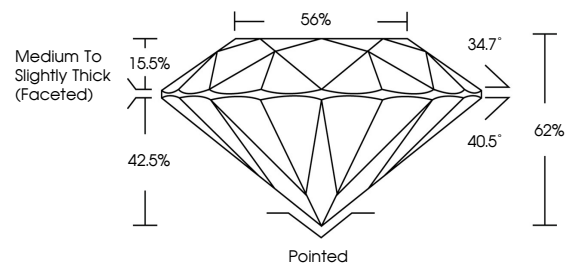
Symmetry **EXCELLENT**

Fluorescence **NONE**

Inscription(s) **LG706523060**

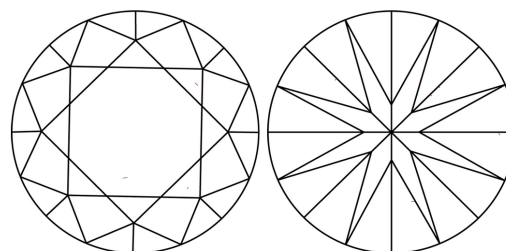
Comments: This Laboratory Grown Diamond was created by High Pressure High Temperature (HPHT) growth process.
Indications of post-growth treatment.

PROPORTIONS



Sample Image Used

CLARITY CHARACTERISTICS



KEY TO SYMBOLS

Red symbols indicate internal characteristics.
Green symbols indicate external characteristics.

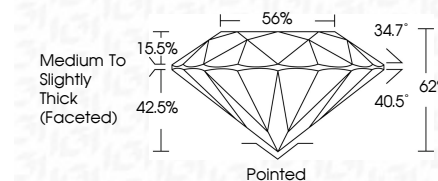
COLOR

D E F G H I J Faint Very Light Light

CLARITY

IF VS¹⁻² VS¹⁻² SI¹⁻² I¹⁻³

Internally Flawless Very Very Slightly Included Very Slightly Included Slightly Included Included



ADDITIONAL GRADING INFORMATION

Polish **EXCELLENT**

Symmetry **EXCELLENT**

Fluorescence **NONE**

Inscription(s) **LG706523060**

Comments: This Laboratory Grown Diamond was created by High Pressure High Temperature (HPHT) growth process.
Indications of post-growth treatment.



IGI



May 13, 2025
IGI Report No LG706523060
ROUND BRILLIANT

1.75 CARAT
FANCY VIVID BLUE
VS 1
IDEAL
62%
56%
Medium To Slightly Thick (Faceted)

Pointed
EXCELLENT
EXCELLENT
NONE
None
IGI LG706523060

Cutler
Polish
Symmetry
Fluorescence
Inscriptions(s)

Comments: This Laboratory Grown Diamond was created by High Pressure High Temperature (HPHT) growth process.
Indications of post-growth treatment.