



ELECTRONIC COPY

LG706523040
Report verification at igi.org



May 13, 2025

IGI Report Number **LG706523040**

Description **LABORATORY GROWN DIAMOND**

Shape and Cutting Style **EMERALD CUT**

Measurements **6.70 X 4.77 X 3.41 MM**

GRADING RESULTS

Carat Weight **1.09 CARAT**

Color Grade **FANCY VIVID BLUE**

Clarity Grade **VS 1**

May 13, 2025
IGI Report Number **LG706523040**
Description **LABORATORY GROWN DIAMOND**
Shape and Cutting Style **EMERALD CUT**
Measurements **6.70 X 4.77 X 3.41 MM**

GRADING RESULTS

Carat Weight **1.09 CARAT**

Color Grade **FANCY VIVID BLUE**

Clarity Grade **VS 1**

ADDITIONAL GRADING INFORMATION

Polish **VERY GOOD**

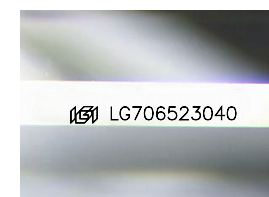
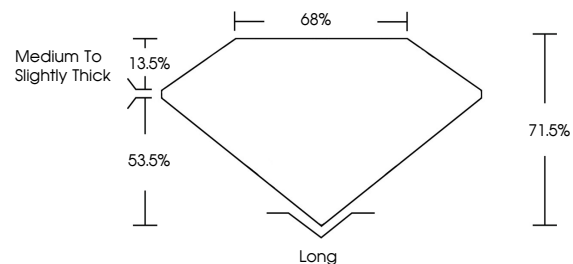
Symmetry **VERY GOOD**

Fluorescence **NONE**

Inscription(s) **IGI LG706523040**

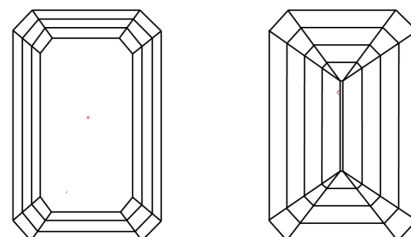
Comments: This Laboratory Grown Diamond was created by High Pressure High Temperature (HPHT) growth process. Indications of post-growth treatment.

PROPORTIONS



Sample Image Used

CLARITY CHARACTERISTICS



KEY TO SYMBOLS

Red symbols indicate internal characteristics.
Green symbols indicate external characteristics.

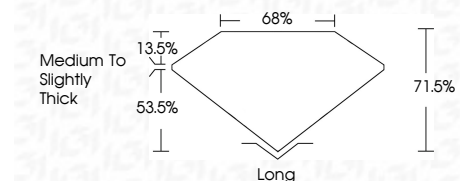
COLOR

D E F G H I J Faint Very Light Light

CLARITY

IF VS¹⁻² VS¹⁻² SI¹⁻² I¹⁻³

Internally Flawless Very Very Slightly Included Very Slightly Included Slightly Included Included



ADDITIONAL GRADING INFORMATION

Polish **VERY GOOD**

Symmetry **VERY GOOD**

Fluorescence **NONE**

Inscription(s) **IGI LG706523040**

Comments: This Laboratory Grown Diamond was created by High Pressure High Temperature (HPHT) growth process. Indications of post-growth treatment.



IGI



May 13, 2025
IGI Report No LG706523040
EMERALD CUT
1.09 CARAT
6.70 X 4.77 X 3.41 MM
Color Grade **FANCY VIVID BLUE**
Clarity Grade **VS 1**
Depth **71.6%**
Table **68%**
Girdle **Medium to Slightly Thick**
Culet **Long**
Polish **VERY GOOD**
Symmetry **VERY GOOD**
Fluorescence **NONE**
Inscription(s) **IGI LG706523040**
Comments: This Laboratory Grown Diamond was created by High Pressure High Temperature (HPHT) growth process. Indications of post-growth treatment.