



**ELECTRONIC COPY**

LG706520118  
Report verification at igi.org



May 7, 2025

IGI Report Number **LG706520118**

Description **LABORATORY GROWN DIAMOND**

Shape and Cutting Style **ROUND BRILLIANT**

Measurements **7.68 - 7.74 X 4.74 MM**

**GRADING RESULTS**

Carat Weight **1.72 CARAT**

Color Grade **E**

Clarity Grade **VS 1**

Cut Grade **IDEAL**

May 7, 2025  
IGI Report Number **LG706520118**  
Description **LABORATORY GROWN DIAMOND**  
Shape and Cutting Style **ROUND BRILLIANT**  
Measurements **7.68 - 7.74 X 4.74 MM**

**GRADING RESULTS**

Carat Weight **1.72 CARAT**

Color Grade **E**

Clarity Grade **VS 1**

Cut Grade **IDEAL**

**ADDITIONAL GRADING INFORMATION**

Polish **EXCELLENT**

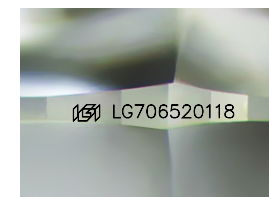
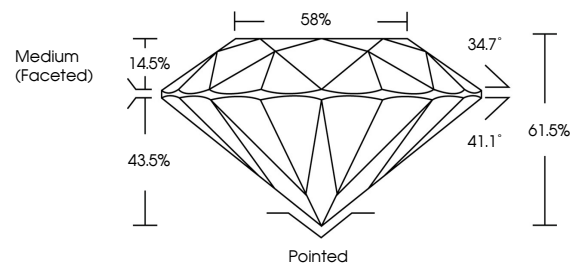
Symmetry **EXCELLENT**

Fluorescence **NONE**

Inscription(s) **LG706520118**

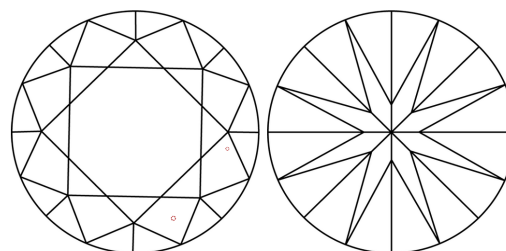
Comments: This Laboratory Grown Diamond was created by Chemical Vapor Deposition (CVD) growth process.  
Type IIa

**PROPORTIONS**



Sample Image Used

**CLARITY CHARACTERISTICS**



**KEY TO SYMBOLS**

Red symbols indicate internal characteristics.  
Green symbols indicate external characteristics.

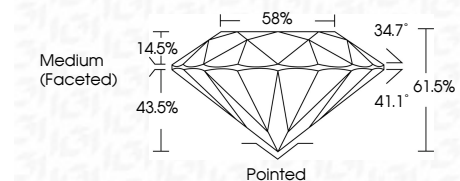
**COLOR**

D E F G H I J Faint Very Light Light

**CLARITY**

IF WS<sup>1-2</sup> VS<sup>1-2</sup> SI<sup>1-2</sup> I<sup>1-3</sup>

Internally Flawless Very Very Slightly Included Very Slightly Included Slightly Included Included



**ADDITIONAL GRADING INFORMATION**

Polish **EXCELLENT**

Symmetry **EXCELLENT**

Fluorescence **NONE**

Inscription(s) **LG706520118**

Comments: This Laboratory Grown Diamond was created by Chemical Vapor Deposition (CVD) growth process.  
Type IIa



**IGI**



May 7, 2025	IGI Report No LG706520118	1.72 CARAT	E	VS 1	IDEAL	61.5%	58%	Medium (Faceted)	Pointed	EXCELLENT	EXCELLENT	NONE	LG706520118
ROUND BRILLIANT	7.68 - 7.74 X 4.74 MM	Color Grade	Cut Grade	Depth	Table	Girdle				Polish	Symmetry	Fluorescence	Inscription(s)

Comments: This Laboratory Grown Diamond was created by Chemical Vapor Deposition (CVD) growth process.  
Type IIa