



ELECTRONIC COPY

LG706518575
Report verification at igi.org



May 13, 2025

IGI Report Number **LG706518575**

Description **LABORATORY GROWN DIAMOND**

Shape and Cutting Style **ROUND BRILLIANT**

Measurements **9.68 - 9.74 X 6.05 MM**

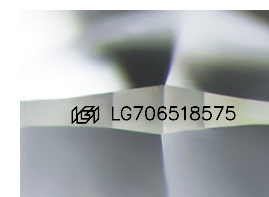
GRADING RESULTS

Carat Weight **3.56 CARATS**

Color Grade **FANCY INTENSE YELLOWISH GREEN**

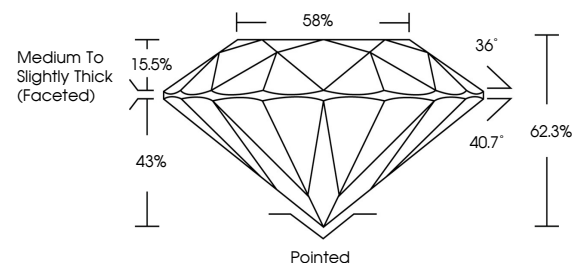
Clarity Grade **VS 1**

Cut Grade **IDEAL**

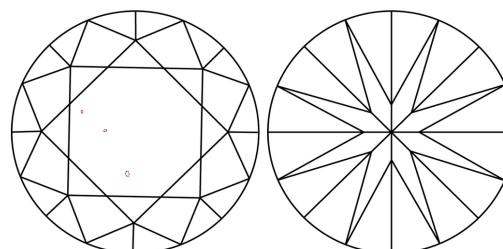


Sample Image Used

PROPORTIONS



CLARITY CHARACTERISTICS



KEY TO SYMBOLS

Red symbols indicate internal characteristics.
Green symbols indicate external characteristics.

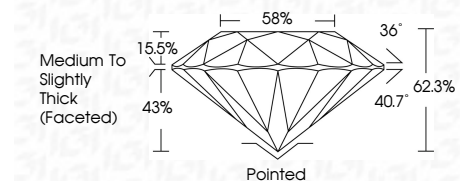
COLOR

D E F G H I J Faint Very Light Light

CLARITY

IF WS¹⁻² VS¹⁻² SI¹⁻² I¹⁻³

Internally Flawless Very Very Slightly Included Very Slightly Included Slightly Included Included



ADDITIONAL GRADING INFORMATION

Polish **EXCELLENT**

Symmetry **EXCELLENT**

Fluorescence **VERY SLIGHT**

Inscription(s) **IGI LG706518575**

Comments: This Laboratory Grown Diamond was created by Chemical Vapor Deposition (CVD) growth process. Indications of post-growth treatment.



May 13, 2025
IGI Report No LG706518575
ROUND BRILLIANT

3.56 CARATS
Carat Weight
FANCY INTENSE YELLOWISH GREEN
Color Grade
VS 1
Clarity Grade
IDEAL
Cut Grade
62.3%
58%
Medium To Slightly Thick (Faceted)
Grade

Pointed
EXCELLENT
EXCELLENT
VERY SLIGHT
IGI LG706518575

Cutler
Polish
Symmetry
Fluorescence
Inscription(s)

Comments: This Laboratory Grown Diamond was created by Chemical Vapor Deposition (CVD) growth process. Indications of post-growth treatment.