

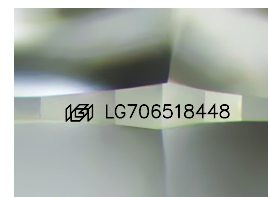
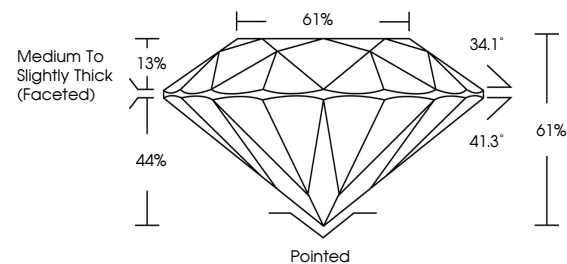


**ELECTRONIC COPY**

## LABORATORY GROWN DIAMOND REPORT

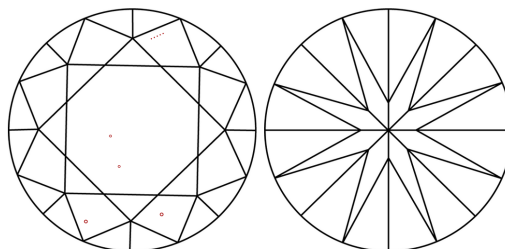
LG706518448  
Report verification at [igi.org](https://igi.org)

## PROPORTIONS



Sample Image Used

## CLARITY CHARACTERISTICS



### KEY TO SYMBOLS

Red symbols indicate internal characteristics.  
Green symbols indicate external characteristics.

## COLOR

D E F G H I J Faint Very Light Light

## CLARITY

IF WS<sup>1-2</sup> VS<sup>1-2</sup> SI<sup>1-2</sup> |<sup>1-3</sup>

Internally Flawless	Very Very Slightly Included	Very Slightly Included	Slightly Included	Included
------------------------	--------------------------------	---------------------------	----------------------	----------

## LABORATORY GROWN DIAMOND REPORT



May 13, 2025

IGI Report Number **LG706518448**Description **LABORATORY GROWN DIAMOND**Shape and Cutting Style **ROUND BRILLIANT**

Measurements 10.12 - 10.16 X 6.19 MM

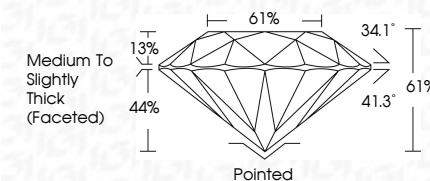
## GRADING RESULTS

Carat Weight **3.91 CARATS**

Color Grade F

Clarity Grade VS 2

Cut Grade **EXCELLENT**



### ADDITIONAL GRADING INFORMATION

Polish **EXCELLENT**Symmetry **EXCELLENT**Fluorescence **NONE**Inscription(s)  LG706518448

Comments: This Laboratory Grown Diamond was created by Chemical Vapor Deposition (CVD) growth process.  
Type IIa



© IGI 2020, International Gemological Institute

FD - 10 20



THIS DOCUMENT WAS PRODUCED WITH THE FOLLOWING SECURITY MEASURES: SPECIAL DOCUMENT PAPER, INK SCREENS, WATERMARK, BACKGROUND DESIGNS, HOLOGRAM AND OTHER SECURITY FEATURES NOT LISTED AND DO EXCEED DOCUMENT SECURITY INDUSTRY GUIDELINES

**www.igi.org**

