



ELECTRONIC COPY

LABORATORY GROWN DIAMOND REPORT

May 12, 2025	
IGI Report Number	LG706517834
Description	LABORATORY GROWN DIAMOND
Shape and Cutting Style	CUT CORNERED RECTANGULAR MODIFIED BRILLIANT
Measurements	15.16 X 10.61 X 7.16 MM

GRADING RESULTS

Carat Weight	10.20 CARATS
Color Grade	E
Clarity Grade	VVS 2

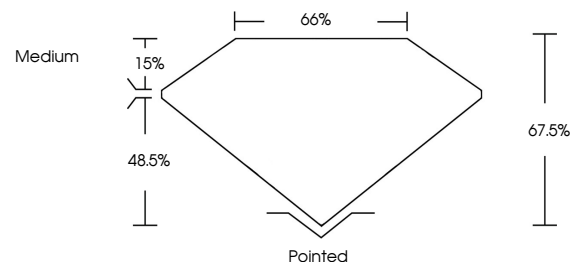
ADDITIONAL GRADING INFORMATION

Polish	EXCELLENT
Symmetry	EXCELLENT
Fluorescence	NONE
Inscription(s)	 LG706517834

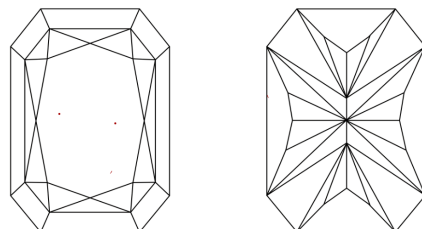
Comments: This Laboratory Grown Diamond was created by Chemical Vapor Deposition (CVD) growth process.
Type IIa

LG706517834
Report verification at lgi.org

PROPORTIONS

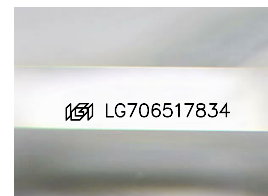


CLARITY CHARACTERISTICS



KEY TO SYMBOLS

Red symbols indicate internal characteristics.
Green symbols indicate external characteristics.



Sample Image Used

COLOR

D E F G H I J Faint Very Light Light

CLARITY

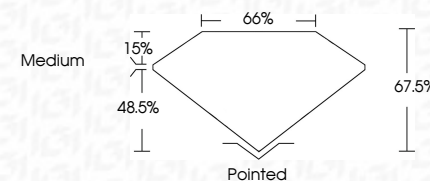
IF VWS¹⁻² VS¹⁻² SI¹⁻² I¹⁻³

Internally Flawless	Very Very Slightly Included	Very Slightly Included	Slightly Included	Included
------------------------	--------------------------------	---------------------------	----------------------	----------

LABORATORY GROWN DIAMOND REPORT



May 12, 2025	
IGI Report Number	LG706517834
Description	LABORATORY GROWN DIAMOND
Shape and Cutting Style	CUT CORNERED RECTANGULAR MODIFIED BRILLIANT
Measurements	15.16 X 10.61 X 7.16 MM
GRADING RESULTS	
Carat Weight	10.20 CARATS
Color Grade	E
Clarity Grade	VVS 2



ADDITIONAL GRADING INFORMATION

Polish	EXCELLENT
Symmetry	EXCELLENT
Fluorescence	NONE
Inscription(s)	 LG706517834
<p>Comments: This Laboratory Grown Diamond was created by Chemical Vapor Deposition (CVD) growth process.</p> <p>Type IIa</p>	



© IGI 2020, International Gemological Institute

FD - 10 20

www.igi.org

THIS DOCUMENT WAS PRODUCED WITH THE FOLLOWING SECURITY MEASURES: SPECIAL DOCUMENT PAPER, INK SCREENS, WATERMARK, BACKGROUND DESIGNS, HOLOGRAM AND OTHER SECURITY FEATURES NOT LISTED AND DO EXCEED DOCUMENT SECURITY INDUSTRY GUIDELINE

May 12, 2025	GI Report No LG70557/7834	CU CUT CORNERED RECT. MODIFIED BRILLIANT
16.16 X 10.61 X 7.16 MM	Carat Weight	10.20 CARATS
Color Grade	VVS 2	E
Clarity Grade	67.5%	
Depth	66%	
Table	Medium	
Girdle	Pointed	
Culet	EXCELLENT	
Polish	EXCELLENT	
Symmetry	NONE	
Fluorescence	lg8 LG70557/7834	
Inscriptions(s)		

Comments: This is a very Clean Diamond was created by Chemical Vapor Deposition (CVD) growth process.

Type IIA