



**INTERNATIONAL
GEMOLOGICAL
INSTITUTE**

ELECTRONIC COPY

LG706516903
Report verification at igi.org

LABORATORY GROWN DIAMOND REPORT



May 7, 2025

IGI Report Number **LG706516903**

Description	LABORATORY GROWN DIAMOND
-------------	--------------------------

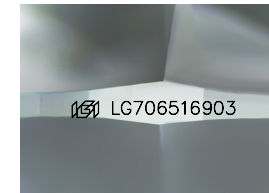
Shape and Cutting Style **CUSHION MODIFIED
BRILLIANT**

Measurements **7.37 X 5.56 X 3.54 MM**

GRADING RESULTS

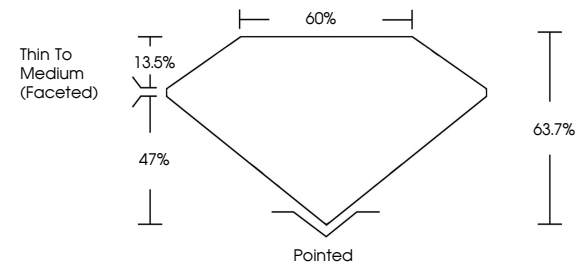
Carat Weight **1.07 CARAT**

Color Grade **E**

Clarity Grade **VS 2**

Sample Image Used

PROPORTIONS



COLOR

D E F G H I J Faint Very Light Light

CLARITY

IF VWS¹⁻² VS¹⁻² S¹⁻² |¹⁻³

Internally Flawless	Very Very Slightly Included	Very Slightly Included	Slightly Included	Included
------------------------	--------------------------------	---------------------------	----------------------	----------

ADDITIONAL GRADING INFORMATION

Polish **EXCELLENT**

Symmetry **EXCELLENT**

Fluorescence **NONE**

Inscription(s) LG706516903

Comments: This Laboratory Grown Diamond was created by Chemical Vapor Deposition (CVD) growth process.
Type IIa



IGI



© IGI 2020, International Gemological Institute

FD - 10 20

www.igi.org

THIS DOCUMENT WAS PRODUCED WITH THE FOLLOWING SECURITY MEASURES: SPECIAL DOCUMENT PAPER, INK SCREENS, WATERMARK BACKGROUND DESIGNS, Hologram AND OTHER SECURITY FEATURES NOT LISTED AND DO EXCEED DOCUMENT SECURITY INDUSTRY GUIDELINES

May 7, 2025
 LG Report No LG706516903
 DIVISION MODIFIED BRILLIANT

3,37 X 5,56 X 3,54 MM	1.07 CARAT
Color Grade	E
Clarity Grade	VS 2
Depth	63.7%
Table	60%
Girdle	Thin To Medium (graded)
Culet	Pointed
Polish	EXCELLENT
Symmetry	EXCELLENT
Fluorescence	NONE
Proportions (%)	See IGI 7051/1903

Comments:
This Laboratory Grown Diamond was
created by Chemical Vapor Deposition
(CVD) growth process.
type IIa