



ELECTRONIC COPY

LG706513090
Report verification at igi.org



September 29, 2025

IGI Report Number **LG706513090**

Description **LABORATORY GROWN DIAMOND**

Shape and Cutting Style **ROUND BRILLIANT**

Measurements **6.68 - 6.74 X 4.16 MM**

GRADING RESULTS

Carat Weight **1.14 CARAT**

Color Grade **G**

Clarity Grade **VVS 2**

Cut Grade **IDEAL**

September 29, 2025
IGI Report Number **LG706513090**
Description **LABORATORY GROWN DIAMOND**
Shape and Cutting Style **ROUND BRILLIANT**
Measurements **6.68 - 6.74 X 4.16 MM**

GRADING RESULTS

Carat Weight **1.14 CARAT**

Color Grade **G**

Clarity Grade **VVS 2**

Cut Grade **IDEAL**

ADDITIONAL GRADING INFORMATION

Polish **VERY GOOD**

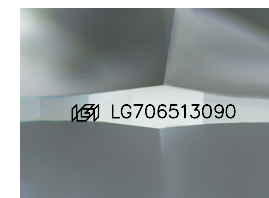
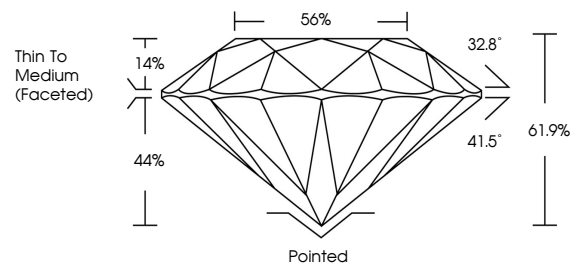
Symmetry **EXCELLENT**

Fluorescence **NONE**

Inscription(s) **IGI LG706513090**

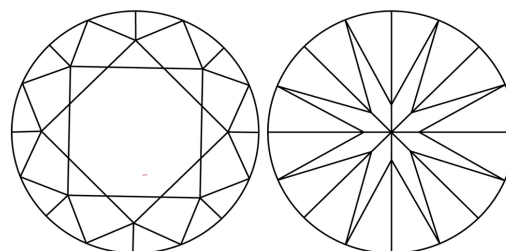
Comments: This Laboratory Grown Diamond was created by Chemical Vapor Deposition (CVD) growth process.
Type IIa

PROPORTIONS



Sample Image Used

CLARITY CHARACTERISTICS



KEY TO SYMBOLS

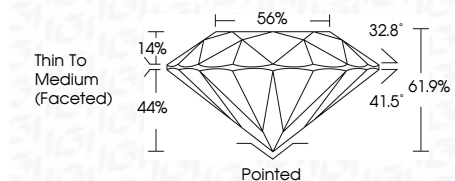
Red symbols indicate internal characteristics.
Green symbols indicate external characteristics.

COLOR

D E F G H I J Faint Very Light Light

CLARITY

FL	IF	VVS ¹⁻²	VS ¹⁻²	SI ¹⁻²	I ¹⁻³
Flawless	Internally Flawless	Very Very Slightly Included	Very Slightly Included	Slightly Included	Included



ADDITIONAL GRADING INFORMATION

Polish **VERY GOOD**

Symmetry **EXCELLENT**

Fluorescence **NONE**

Inscription(s) **IGI LG706513090**

Comments: This Laboratory Grown Diamond was created by Chemical Vapor Deposition (CVD) growth process.
Type IIa



September 29, 2025
IGI Report No LG706513090
ROUND BRILLIANT
6.68 - 6.74 X 4.16 MM
Carat Weight 1.14 CARAT
Color Grade G
Clarity Grade VVS 2
Cut Grade IDEAL
Depth 61.9%
Table 56%
Girdle Thin To Medium (Faceted)
Culet Pointed
Polish VERY GOOD
Symmetry EXCELLENT
Fluorescence NONE
Inscription(s) IGI LG706513090
Comments: This Laboratory Grown Diamond was created by Chemical Vapor Deposition (CVD) growth process.
Type IIa