



ELECTRONIC COPY

LG706507574
Report verification at igi.org



May 23, 2025
IGI Report Number LG706507574
Description LABORATORY GROWN DIAMOND
Shape and Cutting Style ROUND MIXED CUT
Measurements 10.75 - 10.75 X 5.59 MM

GRADING RESULTS
Carat Weight 4.54 CARATS
Color Grade FANCY INTENSE PINK
Clarity Grade VS 1

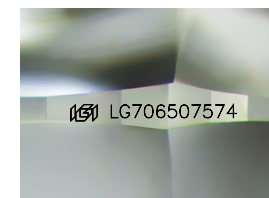
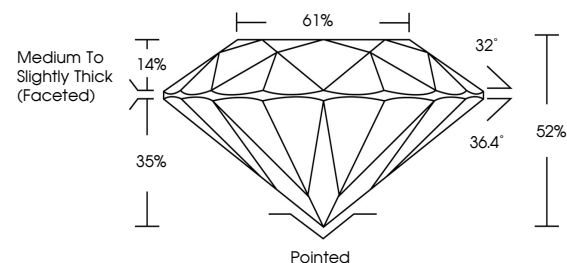
May 23, 2025
IGI Report Number LG706507574
Description LABORATORY GROWN DIAMOND
Shape and Cutting Style ROUND MIXED CUT
Measurements 10.75 - 10.75 X 5.59 MM

GRADING RESULTS
Carat Weight 4.54 CARATS
Color Grade FANCY INTENSE PINK
Clarity Grade VS 1

ADDITIONAL GRADING INFORMATION
Polish EXCELLENT
Symmetry EXCELLENT
Fluorescence SLIGHT
Inscription(s) IGI LG706507574

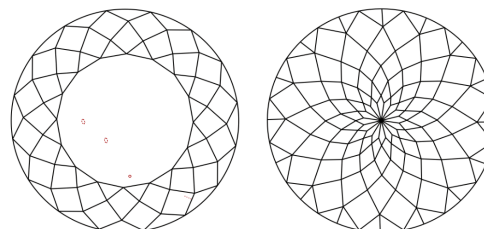
Comments: This Laboratory Grown Diamond was created by Chemical Vapor Deposition (CVD) growth process. Indications of post-growth treatment.

PROPORTIONS



Sample Image Used

CLARITY CHARACTERISTICS



KEY TO SYMBOLS

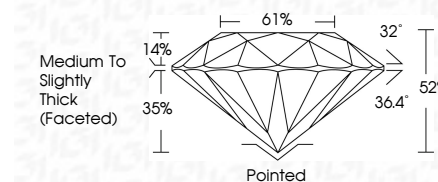
Red symbols indicate internal characteristics.
Green symbols indicate external characteristics.

COLOR

D E F G H I J Faint Very Light Light

CLARITY

IF VS 1-2 VS 1-2 SI 1-2 I 1-3
Internally Flawless Very Very Slightly Included Very Slightly Included Slightly Included Included



ADDITIONAL GRADING INFORMATION

Polish EXCELLENT
Symmetry EXCELLENT
Fluorescence SLIGHT
Inscription(s) IGI LG706507574
Comments: This Laboratory Grown Diamond was created by Chemical Vapor Deposition (CVD) growth process. Indications of post-growth treatment.



May 23, 2025
IGI Report No LG706507574
ROUND MIXED CUT
4.54 CARATS
FANCY INTENSE PINK
VS 1
10.75 - 10.75 X 5.59 MM
Color Grade FANCY INTENSE PINK
Clarity Grade VS 1
Depth 62%
Table 61%
Girdle Medium to Slightly Thick (Faceted)
Culet Pointed
Polish EXCELLENT
Symmetry EXCELLENT
Fluorescence SLIGHT
Inscription(s) IGI LG706507574
Comments: This Laboratory Grown Diamond was created by Chemical Vapor Deposition (CVD) growth process. Indications of post-growth treatment.