



ELECTRONIC COPY

LG706503240
Report verification at igi.org



May 7, 2025

IGI Report Number **LG706503240**

Description **LABORATORY GROWN DIAMOND**

Shape and Cutting Style **ROUND BRILLIANT**

Measurements **9.02 - 9.08 X 5.65 MM**

GRADING RESULTS

Carat Weight **2.86 CARATS**

Color Grade **E**

Clarity Grade **SI 1**

Cut Grade **IDEAL**

May 7, 2025
IGI Report Number **LG706503240**
Description **LABORATORY GROWN DIAMOND**
Shape and Cutting Style **ROUND BRILLIANT**
Measurements **9.02 - 9.08 X 5.65 MM**

GRADING RESULTS

Carat Weight **2.86 CARATS**

Color Grade **E**

Clarity Grade **SI 1**

Cut Grade **IDEAL**

ADDITIONAL GRADING INFORMATION

Polish **EXCELLENT**

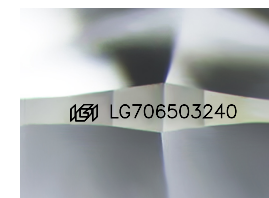
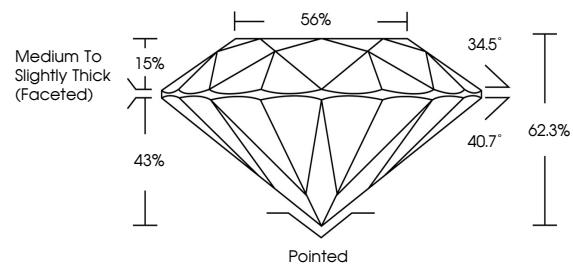
Symmetry **EXCELLENT**

Fluorescence **NONE**

Inscription(s) **LG706503240**

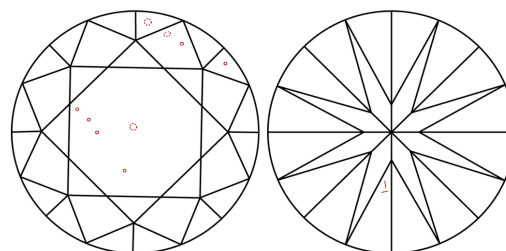
Comments: This Laboratory Grown Diamond was created by Chemical Vapor Deposition (CVD) growth process. Type IIa

PROPORTIONS



Sample Image Used

CLARITY CHARACTERISTICS



KEY TO SYMBOLS

Red symbols indicate internal characteristics.
Green symbols indicate external characteristics.

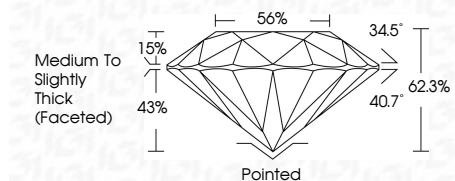
COLOR

D E F G H I J Faint Very Light Light

CLARITY

IF WS¹⁻² VS¹⁻² SI¹⁻² I¹⁻³

Internally Flawless Very Very Slightly Included Very Slightly Included Slightly Included Included



ADDITIONAL GRADING INFORMATION

Polish **EXCELLENT**

Symmetry **EXCELLENT**

Fluorescence **NONE**

Inscription(s) **LG706503240**

Comments: This Laboratory Grown Diamond was created by Chemical Vapor Deposition (CVD) growth process. Type IIa



IGI



May 7, 2025	IGI Report No LG706503240	2.86 CARATS	E	SI 1	IDEAL	62.3%	34.5°	40.7°	15%	43%	Pointed	EXCELLENT	EXCELLENT	NONE	LG706503240
ROUND BRILLIANT	9.02 - 9.08 X 5.65 MM	Color Grade	SI 1	Depth	62.3%	Table	34.5°	Pavilion Angle	15%	43%	Medium To Slightly Thick (Faceted)	Polish	Symmetry	Fluorescence	Inscription(s)

Comments: This Laboratory Grown Diamond was created by Chemical Vapor Deposition (CVD) growth process. Type IIa