



ELECTRONIC COPY

LG705540336 Report verification at igi.org



May 7, 2025 IGI Report Number LG705540336 Description LABORATORY GROWN DIAMOND Shape and Cutting Style CUT CORNERED RECTANGULAR MODIFIED BRILLIANT Measurements 7.30 X 5.10 X 3.44 MM GRADING RESULTS Carat Weight 1.08 CARAT Color Grade D Clarity Grade VVS 1

May 7, 2025 IGI Report Number LG705540336 Description LABORATORY GROWN DIAMOND Shape and Cutting Style CUT CORNERED RECTANGULAR MODIFIED BRILLIANT Measurements 7.30 X 5.10 X 3.44 MM

GRADING RESULTS

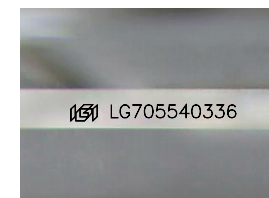
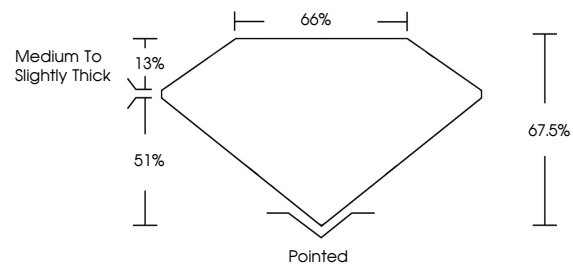
Carat Weight 1.08 CARAT Color Grade D Clarity Grade VVS 1

ADDITIONAL GRADING INFORMATION

Polish EXCELLENT Symmetry EXCELLENT Fluorescence NONE Inscription(s) IGI LG705540336

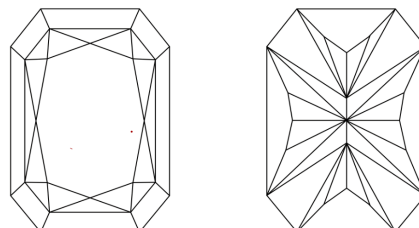
Comments: This Laboratory Grown Diamond was created by Chemical Vapor Deposition (CVD) growth process. Type IIa

PROPORTIONS



Sample Image Used

CLARITY CHARACTERISTICS



KEY TO SYMBOLS

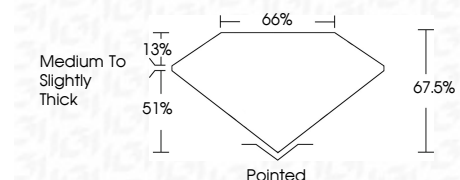
Red symbols indicate internal characteristics. Green symbols indicate external characteristics.

COLOR

D E F G H I J Faint Very Light Light

CLARITY

IF VVS 1-2 VS 1-2 SI 1-2 I 1-3 Internally Flawless Very Very Slightly Included Very Slightly Included Slightly Included Included



ADDITIONAL GRADING INFORMATION

Polish EXCELLENT Symmetry EXCELLENT Fluorescence NONE Inscription(s) IGI LG705540336 Comments: This Laboratory Grown Diamond was created by Chemical Vapor Deposition (CVD) growth process. Type IIa



May 7, 2025 IGI Report No. LG705540336 CUT CORNERED RECT. MODIFIED BRILLIANT 1.08 CARAT D VVS 1 67.0% 65% Medium to Slightly Thick Pointed EXCELLENT EXCELLENT NONE NONE IGI LG705540336 Comments: This Laboratory Grown Diamond was created by Chemical Vapor Deposition (CVD) growth process. Type IIa