



**INTERNATIONAL  
GEMOLOGICAL  
INSTITUTE**

**LABORATORY GROWN DIAMOND REPORT**

May 8, 2025  
 IGI Report Number **LG705534030**  
 Description **LABORATORY GROWN DIAMOND**  
 Shape and Cutting Style **ROUND BRILLIANT**  
 Measurements **6.25 - 6.29 X 3.98 MM**

**GRADING RESULTS**

Carat Weight **0.97 CARAT**  
 Color Grade **D**  
 Clarity Grade **VS 1**  
 Cut Grade **EXCELLENT**

**ADDITIONAL GRADING INFORMATION**

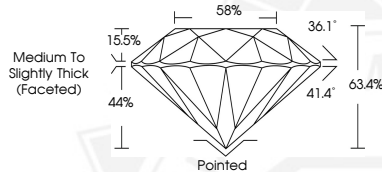
Polish **EXCELLENT**  
 Symmetry **EXCELLENT**  
 Fluorescence **NONE**  
 Inscription(s) **IGI LG705534030**

Comments: This Laboratory Grown Diamond was created by Chemical Vapor Deposition (CVD) growth process. Type IIa

**ELECTRONIC COPY**



Sample Image Used



May 8, 2025  
 IGI Report Number **LG705534030**  
 ROUND BRILLIANT  
 LABORATORY GROWN DIAMOND  
**6.25 - 6.29 X 3.98 MM**  
 Carat Weight **0.97 CARAT**  
 Color Grade **D**  
 Clarity Grade **VS 1**  
 Cut Grade **EXCELLENT**  
 Polish **EXCELLENT**  
 Symmetry **EXCELLENT**  
 Fluorescence **NONE**  
 Inscription(s) **IGI LG705534030**  
 Comments: This Laboratory Grown Diamond was created by Chemical Vapor Deposition (CVD) growth process. Type IIa



May 8, 2025  
 IGI Report Number **LG705534030**  
 ROUND BRILLIANT  
 LABORATORY GROWN DIAMOND  
**6.25 - 6.29 X 3.98 MM**  
 Carat Weight **0.97 CARAT**  
 Color Grade **D**  
 Clarity Grade **VS 1**  
 Cut Grade **EXCELLENT**  
 Polish **EXCELLENT**  
 Symmetry **EXCELLENT**  
 Fluorescence **NONE**  
 Inscription(s) **IGI LG705534030**  
 Comments: This Laboratory Grown Diamond was created by Chemical Vapor Deposition (CVD) growth process. Type IIa

THIS DOCUMENT WAS PRODUCED WITH THE FOLLOWING SECURITY MEASURES: SPECIAL DOCUMENT PAPER, INK SCREENS, WATERMARK, BACKGROUND DESIGN, HOLOGRAM AND OTHER SECURITY FEATURES NOT LISTED AND DO EXCEED DOCUMENT SECURITY INDUSTRY GUIDELINES.

For terms & conditions and to verify this report, please visit [www.igi.org](http://www.igi.org)