



**ELECTRONIC COPY**

## LABORATORY GROWN DIAMOND REPORT

|                         |                          |
|-------------------------|--------------------------|
| May 6, 2025             |                          |
| IGI Report Number       | LG705533487              |
| Description             | LABORATORY GROWN DIAMOND |
| Shape and Cutting Style | ROUND BRILLIANT          |
| Measurements            | 9.28 - 9.34 X 5.70 MM    |

## GRADING RESULTS

|               |             |
|---------------|-------------|
| Carat Weight  | 3.05 CARATS |
| Color Grade   | F           |
| Clarity Grade | VVS 2       |
| Cut Grade     | IDEAL       |

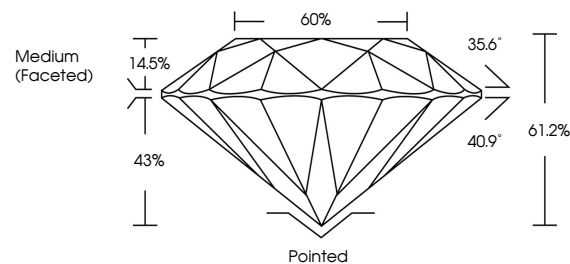
### ADDITIONAL GRADING INFORMATION

|                |   |
|----------------|---|
| Polish         | EXCELLENT   |
| Symmetry       | EXCELLENT   |
| Fluorescence   | NONE  |
| Inscription(s) |  LG705533487 |

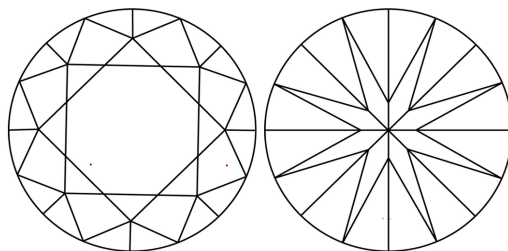
Comments: This Laboratory Grown Diamond was created by Chemical Vapor Deposition (CVD) growth process.  
Type IIa

LG705533487  
Report verification at [igi.org](https://igi.org)

## PROPORTIONS

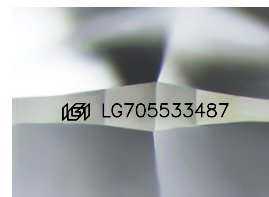


## CLARITY CHARACTERISTICS



## KEY TO SYMBOLS

Red symbols indicate internal characteristics.  
Green symbols indicate external characteristics.



Sample Image Used

**COLOR**

D E F G H I J Faint Very Light Light

## CLARITY

IF                      VS<sup>1-2</sup>                      VS<sup>1-2</sup>                      SI<sup>1-2</sup>                      |<sup>1-3</sup>

| Internally<br>Flawless | Very Very<br>Slightly Included | Very<br>Slightly Included | Slightly<br>Included | Included |
|------------------------|--------------------------------|---------------------------|----------------------|----------|
|------------------------|--------------------------------|---------------------------|----------------------|----------|

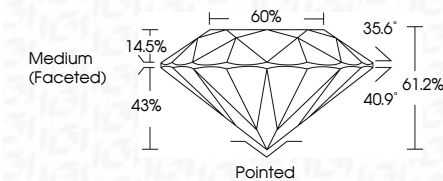
## LABORATORY GROWN DIAMOND REPORT



|                         |                          |
|-------------------------|--------------------------|
| May 6, 2025             |                          |
| IGI Report Number       | LG705533487              |
| Description             | LABORATORY GROWN DIAMOND |
| Shape and Cutting Style | ROUND BRILLIANT          |
| Measurements            | 9.28 - 9.34 X 5.70 MM    |

## GRADING RESULTS

|               |             |
|---------------|-------------|
| Carat Weight  | 3.05 CARATS |
| Color Grade   | F           |
| Clarity Grade | VVS 2       |
| Cut Grade     | IDEAL       |



### ADDITIONAL GRADING INFORMATION

|                |                  |
|----------------|------------------|
| Polish         | EXCELLENT        |
| Symmetry       | EXCELLENT        |
| Fluorescence   | NONE             |
| Inscription(s) | (16) LG705533487 |

Comments: This Laboratory Grown Diamond was created by Chemical Vapor Deposition (CVD) growth process.  
Type IIa



© IGI 2020, International Gemological Institute

FD - 10 20



THIS DOCUMENT WAS PRODUCED WITH THE FOLLOWING SECURITY MEASURES: SPECIAL DOCUMENT PAPER, INK SCREENS, WATERMARK, BACKGROUND DESIGNS, HOLOGRAM AND OTHER SECURITY FEATURES NOT LISTED AND DO EXCEED DOCUMENT SECURITY INDUSTRY GUIDELINES

**www.igi.org**

