



**ELECTRONIC COPY**

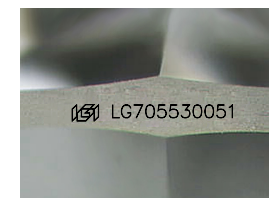
LG705530051  
Report verification at igi.org



June 19, 2025  
IGI Report Number **LG705530051**  
Description **LABORATORY GROWN DIAMOND**  
Shape and Cutting Style **KITE STEP CUT**  
Measurements **12.04 X 6.87 X 4.53 MM**

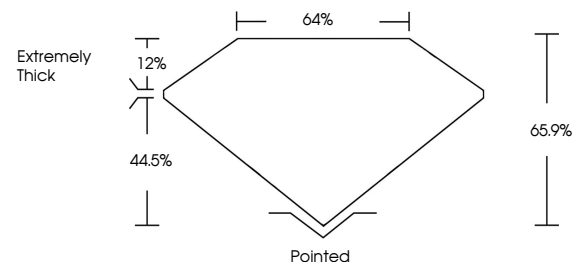
**GRADING RESULTS**

Carat Weight **1.78 CARAT**  
Color Grade **D**  
Clarity Grade **VVS 2**

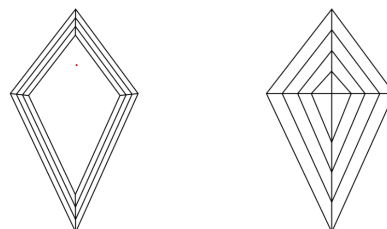


Sample Image Used

**PROPORTIONS**



**CLARITY CHARACTERISTICS**



**KEY TO SYMBOLS**

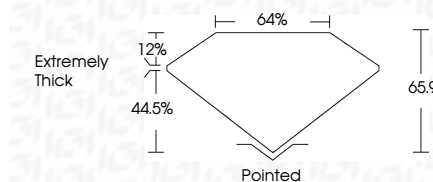
Red symbols indicate internal characteristics.  
Green symbols indicate external characteristics.

**COLOR**

D E F G H I J Faint Very Light Light

**CLARITY**

IF	VS <sup>1-2</sup>	VS <sup>1-2</sup>	SI <sup>1-2</sup>	I <sup>1-3</sup>
Internally Flawless	Very Very Slightly Included	Very Slightly Included	Slightly Included	Included



**ADDITIONAL GRADING INFORMATION**

Polish **EXCELLENT**  
Symmetry **EXCELLENT**  
Fluorescence **NONE**  
Inscription(s) **IGI LG705530051**  
Comments: This Laboratory Grown Diamond was created by Chemical Vapor Deposition (CVD) growth process. Type IIa



June 19, 2025  
IGI Report No LG705530051  
KITE STEP CUT

12.04 X 6.87 X 4.53 MM  
1.78 CARAT  
D  
VVS 2  
65.9%  
44.5%  
Extremely Thick

Pointed  
EXCELLENT  
EXCELLENT  
NONE  
IGI LG705530051

Comments: This Laboratory Grown Diamond was created by Chemical Vapor Deposition (CVD) growth process. Type IIa