



**ELECTRONIC COPY**

LG705522949  
Report verification at igi.org



May 16, 2025

IGI Report Number **LG705522949**

Description **LABORATORY GROWN DIAMOND**

Shape and Cutting Style **CUT CORNERED  
RECTANGULAR MODIFIED  
BRILLIANT**

Measurements **9.52 X 6.77 X 4.53 MM**

**GRADING RESULTS**

Carat Weight **2.59 CARATS**

Color Grade **FANCY VIVID BLUE**

Clarity Grade **VVS 2**

**LABORATORY GROWN DIAMOND REPORT**

May 16, 2025

IGI Report Number **LG705522949**

Description **LABORATORY GROWN DIAMOND**

Shape and Cutting Style **CUT CORNERED RECTANGULAR  
MODIFIED BRILLIANT**

Measurements **9.52 X 6.77 X 4.53 MM**

**GRADING RESULTS**

Carat Weight **2.59 CARATS**

Color Grade **FANCY VIVID BLUE**

Clarity Grade **VVS 2**

**ADDITIONAL GRADING INFORMATION**

Polish **EXCELLENT**

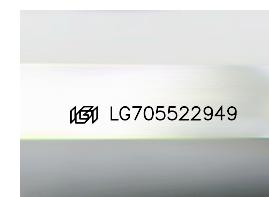
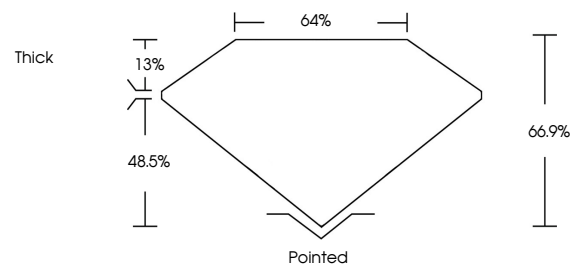
Symmetry **EXCELLENT**

Fluorescence **NONE**

Inscription(s) **IGI LG705522949**

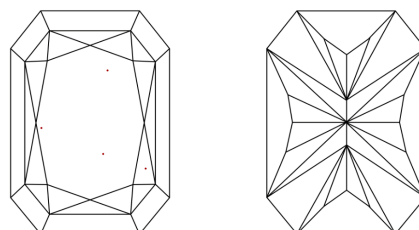
Comments: This Laboratory Grown Diamond was created by Chemical Vapor Deposition (CVD) growth process. Indications of post-growth treatment.

**PROPORTIONS**



Sample Image Used

**CLARITY CHARACTERISTICS**



**KEY TO SYMBOLS**

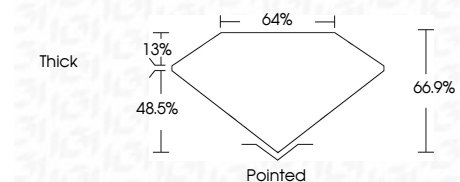
Red symbols indicate internal characteristics.  
Green symbols indicate external characteristics.

**COLOR**

D E F G H I J Faint Very Light Light

**CLARITY**

IF	VS <sup>1-2</sup>	VS <sup>1-2</sup>	SI <sup>1-2</sup>	I <sup>1-3</sup>
Internally Flawless	Very Very Slightly Included	Very Slightly Included	Slightly Included	Included



**ADDITIONAL GRADING INFORMATION**

Polish **EXCELLENT**

Symmetry **EXCELLENT**

Fluorescence **NONE**

Inscription(s) **IGI LG705522949**

Comments: This Laboratory Grown Diamond was created by Chemical Vapor Deposition (CVD) growth process. Indications of post-growth treatment.



**IGI**



May 16, 2025  
IGI Report No LG705522949  
CUT CORNERED RECT. MODIFIED BRILLIANT  
9.52 X 6.77 X 4.53 MM  
2.59 CARATS  
FANCY VIVID BLUE  
VVS 2  
66.9%  
64%  
Thick  
Pointed  
EXCELLENT  
EXCELLENT  
NONE  
IGI LG705522949

Comments: This Laboratory Grown Diamond was created by Chemical Vapor Deposition (CVD) growth process. Indications of post-growth treatment.