



**ELECTRONIC COPY**

LG705522233  
Report verification at igi.org



June 14, 2025

IGI Report Number **LG705522233**

Description **LABORATORY GROWN DIAMOND**

Shape and Cutting Style **ROUND BRILLIANT**

Measurements **9.18 - 9.23 X 5.67 MM**

**GRADING RESULTS**

Carat Weight **3.02 CARATS**

Color Grade **FANCY PINK**

Clarity Grade **VVS 2**

Cut Grade **IDEAL**

June 14, 2025  
IGI Report Number **LG705522233**  
Description **LABORATORY GROWN DIAMOND**  
Shape and Cutting Style **ROUND BRILLIANT**  
Measurements **9.18 - 9.23 X 5.67 MM**

**GRADING RESULTS**

Carat Weight **3.02 CARATS**

Color Grade **FANCY PINK**

Clarity Grade **VVS 2**

Cut Grade **IDEAL**

**ADDITIONAL GRADING INFORMATION**

Polish **EXCELLENT**

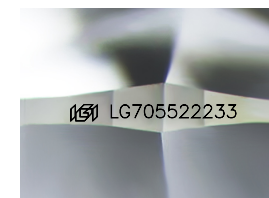
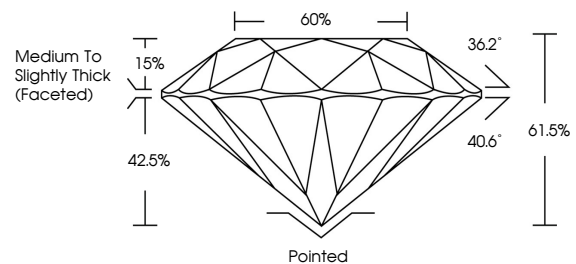
Symmetry **EXCELLENT**

Fluorescence **SLIGHT**

Inscription(s) **LG705522233**

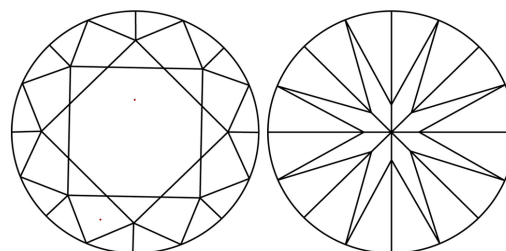
Comments: This Laboratory Grown Diamond was created by Chemical Vapor Deposition (CVD) growth process.  
Indications of post-growth treatment.

**PROPORTIONS**



Sample Image Used

**CLARITY CHARACTERISTICS**



**KEY TO SYMBOLS**

Red symbols indicate internal characteristics.  
Green symbols indicate external characteristics.

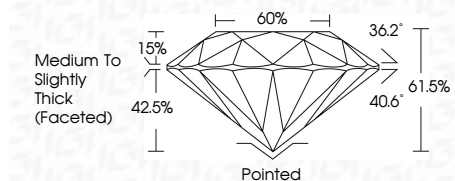
**COLOR**

D E F G H I J Faint Very Light Light

**CLARITY**

IF VS<sup>1-2</sup> VS<sup>1-2</sup> SI<sup>1-2</sup> I<sup>1-3</sup>

Internally Flawless Very Very Slightly Included Very Slightly Included Slightly Included Included



**ADDITIONAL GRADING INFORMATION**

Polish **EXCELLENT**

Symmetry **EXCELLENT**

Fluorescence **SLIGHT**

Inscription(s) **LG705522233**

Comments: This Laboratory Grown Diamond was created by Chemical Vapor Deposition (CVD) growth process.  
Indications of post-growth treatment.



June 14, 2025  
IGI Report No LG705522233  
ROUND BRILLIANT

3.02 CARATS  
FANCY PINK

Carat Weight  
Color Grade  
Clarity Grade  
Depth  
Table  
Girdle  
Medium To Slightly Thick (Faceted)

Pointed  
EXCELLENT  
EXCELLENT  
SLIGHT  
SLIGHT

9.18 - 9.23 X 5.67 MM  
VVS 2  
IDEAL  
61.5%  
60%

IGI LG705522233

Comments: This Laboratory Grown Diamond was created by Chemical Vapor Deposition (CVD) growth process.  
Indications of post-growth treatment.