



ELECTRONIC COPY

LG705522231
Report verification at igi.org



May 16, 2025
IGI Report Number **LG705522231**
Description **LABORATORY GROWN DIAMOND**
Shape and Cutting Style **ROUND BRILLIANT**
Measurements **9.26 - 9.29 X 5.71 MM**
GRADING RESULTS
Carat Weight **3.09 CARATS**
Color Grade **FANCY INTENSE PINK**
Clarity Grade **VVS 2**
Cut Grade **EXCELLENT**

May 16, 2025
IGI Report Number **LG705522231**
Description **LABORATORY GROWN DIAMOND**
Shape and Cutting Style **ROUND BRILLIANT**
Measurements **9.26 - 9.29 X 5.71 MM**

GRADING RESULTS

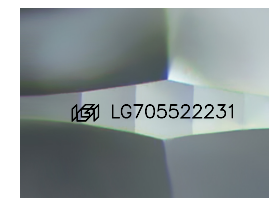
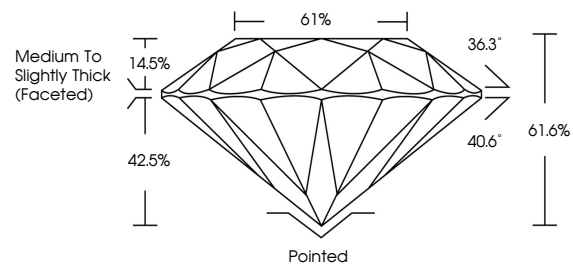
Carat Weight **3.09 CARATS**
Color Grade **FANCY INTENSE PINK**
Clarity Grade **VVS 2**
Cut Grade **EXCELLENT**

ADDITIONAL GRADING INFORMATION

Polish **EXCELLENT**
Symmetry **EXCELLENT**
Fluorescence **SLIGHT**
Inscription(s) **IGI LG705522231**

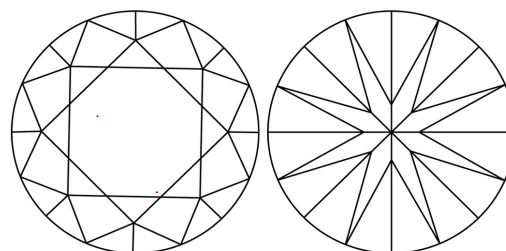
Comments: This Laboratory Grown Diamond was created by Chemical Vapor Deposition (CVD) growth process.
Indications of post-growth treatment.

PROPORTIONS



Sample Image Used

CLARITY CHARACTERISTICS



KEY TO SYMBOLS

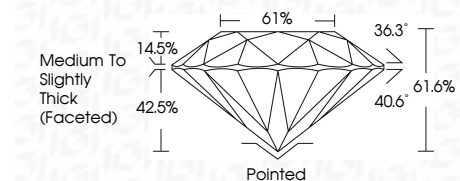
Red symbols indicate internal characteristics.
Green symbols indicate external characteristics.

COLOR

D E F G H I J Faint Very Light Light

CLARITY

IF	WS ¹⁻²	VS ¹⁻²	SI ¹⁻²	I ¹⁻³
Internally Flawless	Very Very Slightly Included	Very Slightly Included	Slightly Included	Included



ADDITIONAL GRADING INFORMATION

Polish **EXCELLENT**
Symmetry **EXCELLENT**
Fluorescence **SLIGHT**
Inscription(s) **IGI LG705522231**
Comments: This Laboratory Grown Diamond was created by Chemical Vapor Deposition (CVD) growth process.
Indications of post-growth treatment.



May 16, 2025
IGI Report No LG705522231
ROUND BRILLIANT
3.09 CARATS
FANCY INTENSE PINK
VVS 2
EXCELLENT
61.6%
61%
Medium To Slightly Thick (Faceted)
Pointed
EXCELLENT
EXCELLENT
SLIGHT
IGI LG705522231
Comments: This Laboratory Grown Diamond was created by Chemical Vapor Deposition (CVD) growth process.
Indications of post-growth treatment.