



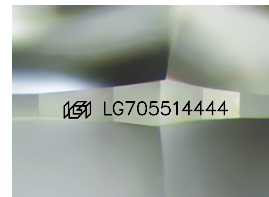
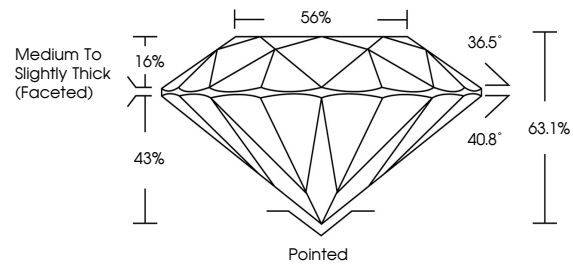
**INTERNATIONAL
GEMOLOGICAL
INSTITUTE**

ELECTRONIC COPY

LABORATORY GROWN DIAMOND REPORT

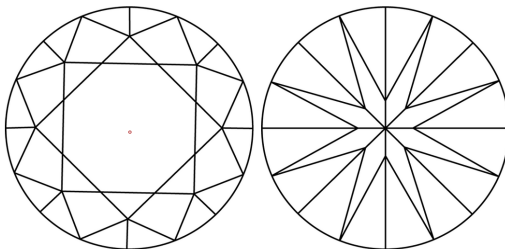
LG70551444
Report verification at igi.org

PROPORTIONS



Sample Image Used

CLARITY CHARACTERISTICS



KEY TO SYMBOLS

Red symbols indicate internal characteristics.
Green symbols indicate external characteristics.

COLOR

D E F G H I J Faint Very Light Light

CLARITY

IF WS¹⁻² VS¹⁻² SI¹⁻² |¹⁻³

Internally Flawless	Very Very Slightly Included	Very Slightly Included	Slightly Included	Included
------------------------	--------------------------------	---------------------------	----------------------	----------



© IGI 2020, International Gemological Institute

FD - 10 20

www.igi.org

LABORATORY GROWN DIAMOND REPORT



May 7, 2025

IGI Report Number **LG705514444**

Description	LABORATORY GROWN DIAMOND
-------------	--------------------------

Shape and Cutting Style **ROUND BRILLIANT**

Measurements	8.08 - 8.12 X 5.11 MM
--------------	-----------------------

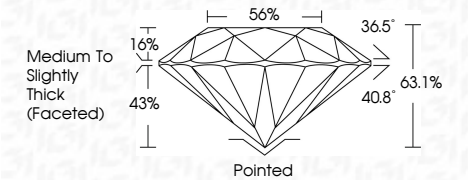
GRADING RESULTS

Carat Weight **2.09 CARATS**

Color Grade **E**

Clarity Grade VS 1

Cut Grade **EXCELLENT**



ADDITIONAL GRADING INFORMATION

Polish **EXCELLENT**Symmetry **EXCELLENT**Fluorescence **NONE**Inscription(s) **131 LG705514444**

Comments: This Laboratory Grown Diamond was created by Chemical Vapor Deposition (CVD) growth process.
Type IIa



IGI

May 7, 2025	IGI Report No. LG705514444	ROUND BRILLIANT	2.09 CARATS	E	VS 1	EXCELLENT	63.1%	56%	Medium to Slightly Thick Faceted	Pointed	EXCELLENT	EXCELLENT	NONE	689 LG705514444	Comments: The Laboratory Growth Diamond was created by Chemical Vapor Deposition (CVD) growth process. Type IIC
		8.08 - 8.12 X 6.11 MM	Color Grade	Clarity Grade	Cut Grade	Depth	Table	Girdle		Symmetry	Fluorescence	Inscriptions			