



**ELECTRONIC COPY**

## LABORATORY GROWN DIAMOND REPORT

|                         |                          |
|-------------------------|--------------------------|
| May 8, 2025             |                          |
| IGI Report Number       | LG705512445              |
| Description             | LABORATORY GROWN DIAMOND |
| Shape and Cutting Style | ROUND BRILLIANT          |
| Measurements            | 11.03 - 11.05 X 6.75 MM  |

## GRADING RESULTS

|               |             |
|---------------|-------------|
| Carat Weight  | 5.06 CARATS |
| Color Grade   | E           |
| Clarity Grade | VS 1        |
| Cut Grade     | IDEAL       |

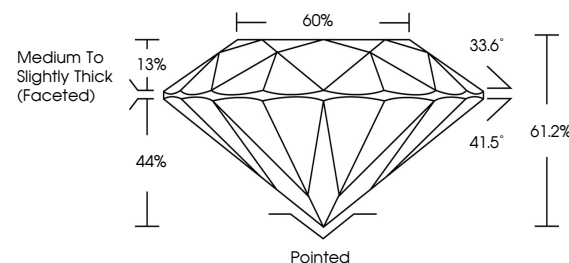
### ADDITIONAL GRADING INFORMATION

|                |                |
|----------------|----------------|
| Polish         | EXCELLENT      |
| Symmetry       | EXCELLENT      |
| Fluorescence   | NONE           |
| Inscription(s) | 15 LG705512445 |

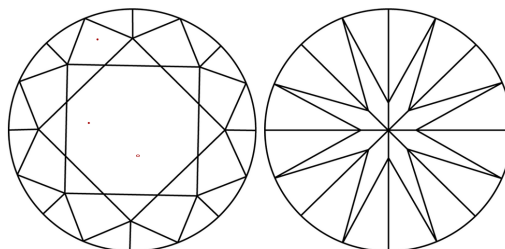
Comments: This Laboratory Grown Diamond was created by Chemical Vapor Deposition (CVD) growth process.  
Type IIa

LG705512445  
Report verification at [igi.org](https://igi.org)

## PROPORTIONS

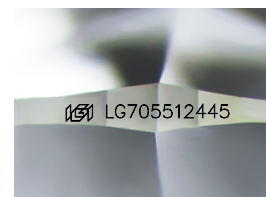


## CLARITY CHARACTERISTICS



## KEY TO SYMBOLS

Red symbols indicate internal characteristics.  
Green symbols indicate external characteristics.



Sample Image Used

## COLOR

D E F G H I J Faint Very Light Light

## CLARITY

IF WS<sup>1-2</sup> VS<sup>1-2</sup> SI<sup>1-2</sup> |<sup>1-3</sup>

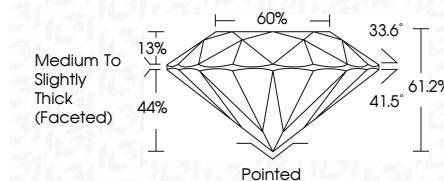
| Internally<br>Flawless | Very Very<br>Slightly Included | Very<br>Slightly Included | Slightly<br>Included | Included |
|------------------------|--------------------------------|---------------------------|----------------------|----------|
|------------------------|--------------------------------|---------------------------|----------------------|----------|



|                         |                          |
|-------------------------|--------------------------|
| May 8, 2025             |                          |
| IGI Report Number       | LG705512445              |
| Description             | LABORATORY GROWN DIAMOND |
| Shape and Cutting Style | ROUND BRILLIANT          |
| Measurements            | 11.03 - 11.05 X 6.75 MM  |

## GRADING RESULTS

|               |             |
|---------------|-------------|
| Carat Weight  | 5.06 CARATS |
| Color Grade   | E           |
| Clarity Grade | VS 1        |
| Cut Grade     | IDEAL       |



### ADDITIONAL GRADING INFORMATION

|  |   |
|--|---|
| Polish   | EXCELLENT   |
| Symmetry   | EXCELLENT   |
| Fluorescence   | NONE  |
| Inscription(s)   |  LG705512445 |
| Comments: This Laboratory Grown Diamond was created by Chemical Vapor Deposition (CVD) growth process. |   |
| Type IIa   |   |



© IGI 2020, International Gemological Institute

FD - 10 20



THIS DOCUMENT WAS PRODUCED WITH THE FOLLOWING SECURITY MEASURES: SPECIAL DOCUMENT PAPER, INK SCREENS, WATERMARK, BACKGROUND DESIGNS, HOLOGRAM AND OTHER SECURITY FEATURES NOT LISTED AND DO EXCEED DOCUMENT SECURITY INDUSTRY GUIDELINE

**www.igi.org**

