



ELECTRONIC COPY

LG705512284
Report verification at igi.org



May 2, 2025

IGI Report Number **LG705512284**

Description **LABORATORY GROWN DIAMOND**

Shape and Cutting Style **ROUND BRILLIANT**

Measurements **10.25 - 10.28 X 6.27 MM**

GRADING RESULTS

Carat Weight **4.04 CARATS**

Color Grade **F**

Clarity Grade **VVS 2**

Cut Grade **IDEAL**

May 2, 2025

IGI Report Number **LG705512284**

Description **LABORATORY GROWN DIAMOND**

Shape and Cutting Style **ROUND BRILLIANT**

Measurements **10.25 - 10.28 X 6.27 MM**

GRADING RESULTS

Carat Weight **4.04 CARATS**

Color Grade **F**

Clarity Grade **VVS 2**

Cut Grade **IDEAL**

ADDITIONAL GRADING INFORMATION

Polish **EXCELLENT**

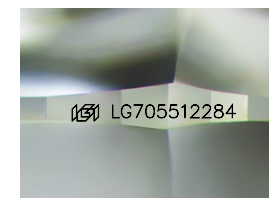
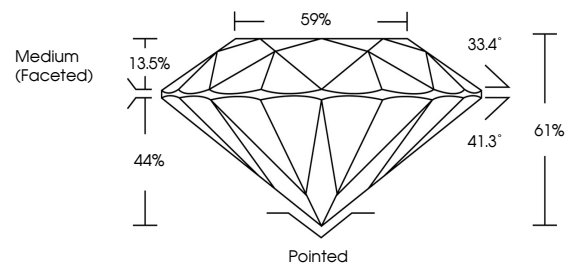
Symmetry **EXCELLENT**

Fluorescence **NONE**

Inscription(s) **LG705512284**

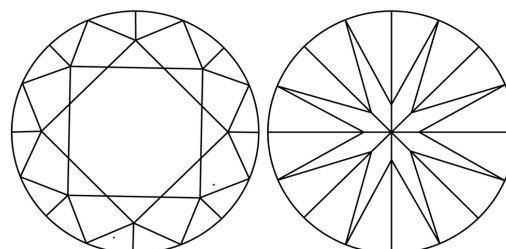
Comments: This Laboratory Grown Diamond was created by Chemical Vapor Deposition (CVD) growth process.
Type IIa

PROPORTIONS



Sample Image Used

CLARITY CHARACTERISTICS



KEY TO SYMBOLS

Red symbols indicate internal characteristics.
Green symbols indicate external characteristics.

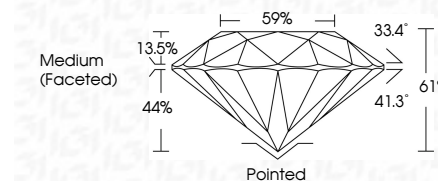
COLOR

D E F G H I J Faint Very Light Light

CLARITY

IF WS¹⁻² VS¹⁻² SI¹⁻² I¹⁻³

Internally Flawless Very Very Slightly Included Very Slightly Included Slightly Included Included



ADDITIONAL GRADING INFORMATION

Polish **EXCELLENT**

Symmetry **EXCELLENT**

Fluorescence **NONE**

Inscription(s) **LG705512284**

Comments: This Laboratory Grown Diamond was created by Chemical Vapor Deposition (CVD) growth process.
Type IIa



IGI



May 2, 2025
IGI Report No LG705512284
ROUND BRILLIANT

4.04 CARATS
F

10.25 - 10.28 X 6.27 MM

Carat Weight
Color Grade
Clarity Grade
Depth
Table
Girdle
Medium (Faceted)

VVS 2
IDEAL
61%
59%

Pointed
EXCELLENT
EXCELLENT
NONE
NONE
IGI LG705512284

Cutler
Polish
Symmetry
Fluorescence
Inscriptions(s)

Comments: This Laboratory Grown Diamond was created by Chemical Vapor Deposition (CVD) growth process.
Type IIa