



**ELECTRONIC COPY**

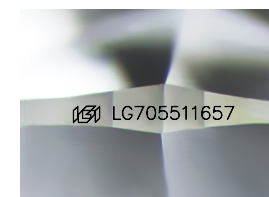
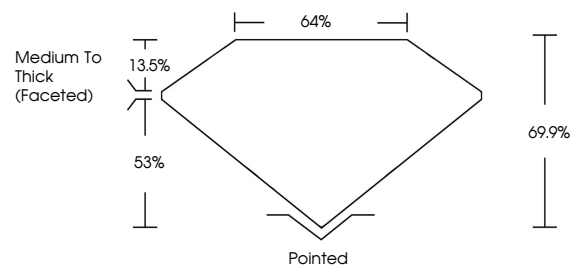
LG705511657  
Report verification at igi.org



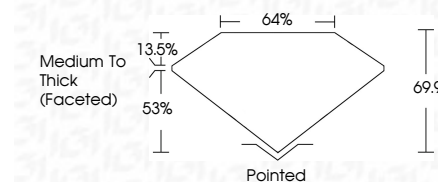
May 10, 2025  
IGI Report Number **LG705511657**  
Description **LABORATORY GROWN DIAMOND**  
Shape and Cutting Style **CUSHION MODIFIED BRILLIANT**  
Measurements **9.90 X 8.27 X 5.78 MM**  
**GRADING RESULTS**  
Carat Weight **4.02 CARATS**  
Color Grade **FANCY VIVID PINK**  
Clarity Grade **VS 1**

May 10, 2025  
IGI Report Number **LG705511657**  
Description **LABORATORY GROWN DIAMOND**  
Shape and Cutting Style **CUSHION MODIFIED BRILLIANT**  
Measurements **9.90 X 8.27 X 5.78 MM**  
**GRADING RESULTS**  
Carat Weight **4.02 CARATS**  
Color Grade **FANCY VIVID PINK**  
Clarity Grade **VS 1**

**PROPORTIONS**



Sample Image Used



**ADDITIONAL GRADING INFORMATION**

Polish **EXCELLENT**  
Symmetry **EXCELLENT**  
Fluorescence **STRONG**  
Inscription(s) **IGI LG705511657**

Comments: This Laboratory Grown Diamond was created by Chemical Vapor Deposition (CVD) growth process. Indications of post-growth treatment.

**ADDITIONAL GRADING INFORMATION**

Polish **EXCELLENT**  
Symmetry **EXCELLENT**  
Fluorescence **STRONG**  
Inscription(s) **IGI LG705511657**

Comments: This Laboratory Grown Diamond was created by Chemical Vapor Deposition (CVD) growth process. Indications of post-growth treatment.

**COLOR**

D E F G H I J Faint Very Light Light

**CLARITY**

IF VS<sup>1-2</sup> VS<sup>1-2</sup> SI<sup>1-2</sup> I<sup>1-3</sup>

Internally Flawless Very Very Slightly Included Very Slightly Included Slightly Included Included



**IGI**



May 10, 2025  
IGI Report No **LG705511657**  
**CUSHION MODIFIED BRILLIANT**  
**4.02 CARATS**  
Carat Weight **FANCY VIVID PINK**  
Color Grade **VS 1**  
Depth **69.9%**  
Table **64%**  
Girdle **Medium To Thick (Faceted)**  
Culet **Pointed**  
Polish **EXCELLENT**  
Symmetry **EXCELLENT**  
Fluorescence **STRONG**  
Inscription(s) **IGI LG705511657**

Comments: This Laboratory Grown Diamond was created by Chemical Vapor Deposition (CVD) growth process. Indications of post-growth treatment.