



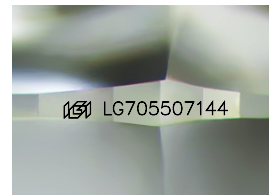
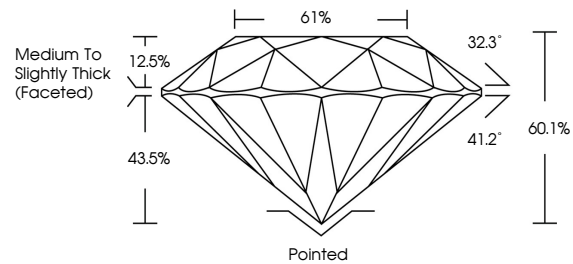
**INTERNATIONAL  
GEMOLOGICAL  
INSTITUTE**

**ELECTRONIC COPY**

## LABORATORY GROWN DIAMOND REPORT

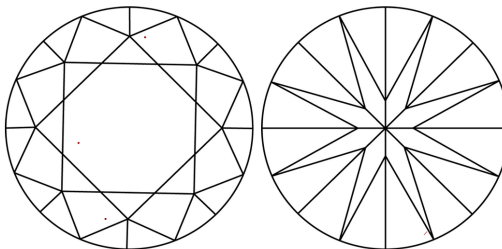
LG705507144  
Report verification at [igi.org](https://www.igi.org)

## PROPORTIONS



Sample Image Used

## CLARITY CHARACTERISTICS



## KEY TO SYMBOLS

Red symbols indicate internal characteristics.  
Green symbols indicate external characteristics.

**COLOR**

D E F G H I J      Faint      Very Light      Light

## CLARITY

IF      WS<sup>1-2</sup>      VS<sup>1-2</sup>      SI<sup>1-2</sup>      |<sup>1-3</sup>

Internally Flawless	Very Very Slightly Included	Very Slightly Included	Slightly Included	Included
------------------------	--------------------------------	---------------------------	----------------------	----------



May 7, 2025

IGI Report Number **LG705507144**

Description	LABORATORY GROWN DIAMOND
-------------	--------------------------

Shape and Cutting Style **ROUND BRILLIANT**

Measurements 8.14 - 8.17 X 4.89 MM

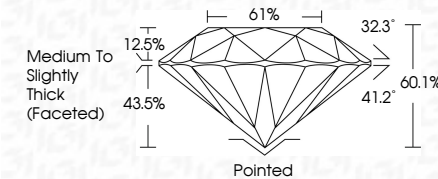
## GRADING RESULTS

Carat Weight **2.00 CARATS**

Color Grade **D**

Clarity Grade VS 1

Cut Grade **EXCELLENT**



### ADDITIONAL GRADING INFORMATION

Polish VERY GOOD

Symmetry **EXCELLENT**Fluorescence **NONE**Inscription(s) **131** LG70550714

Comments: This Laboratory Grown Diamond was created by Chemical Vapor Deposition (CVD) growth process.  
Type IIa



IG



© IGI 2020, International Gemological Institute

FD - 10 20



THIS DOCUMENT WAS PRODUCED WITH THE FOLLOWING SECURITY MEASURES: SPECIAL DOCUMENT PAPER, INK SCREENS, WATERMARK, BACKGROUND DESIGNS, HOLOGRAM AND OTHER SECURITY FEATURES NOT LISTED AND DO EXCEED DOCUMENT SECURITY INDUSTRY GUIDELINES

**www.igi.org**

May 7, 2025	IGI Report No LG705507144	ROUND BRILLIANT	2.00 CARATS	D
		18.14 x 18.17 x 4.59 MM		
	Carat Weight		Vs 1	
	Color Grade		EXCELLENT	
	Cut Grade		6A 1%	
	Depth			
	Table			
	Girdle		Medium to Slightly Thick (Faceted)	
	Culet		Pointed	
	Polish		VERY GOOD	
	Symmetry		EXCELLENT	
	Fluorescence		NONE	
	Inscriptions(s)		681LG705507144	
	Comments:			
	This Laboratory Grown Diamond was created by Chemical Vapor Deposition (CVD) growth process.			
	Type I Ia			