



ELECTRONIC COPY

LABORATORY GROWN DIAMOND REPORT

May 10, 2025	
IGI Report Number	LG705506196
Description	LABORATORY GROWN DIAMOND
Shape and Cutting Style	ROUND BRILLIANT
Measurements	8.07 - 8.14 X 5.04 MM

GRADING RESULTS

Carat Weight	2.06 CARATS
Color Grade	FANCY INTENSE PINK
Clarity Grade	VS 2
Cut Grade	VERY GOOD

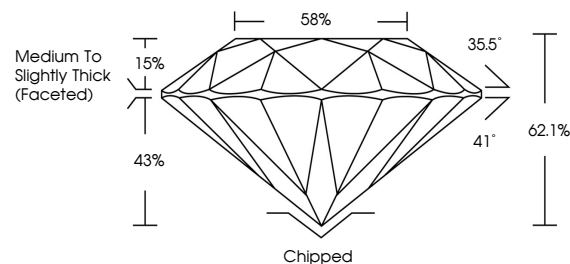
ADDITIONAL GRADING INFORMATION

Polish	GOOD
Symmetry	VERY GOOD
Fluorescence	SLIGHT
Inscription(s)	 LG705506196

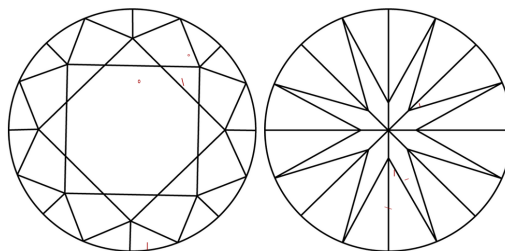
Comments: This Laboratory Grown Diamond was created by Chemical Vapor Deposition (CVD) growth process.
Indications of post-growth treatment.

LG705506196
Report verification at igi.org

PROPORTIONS

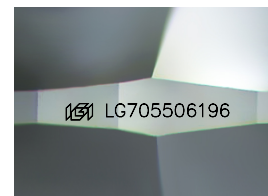


CLARITY CHARACTERISTICS



KEY TO SYMBOLS

Red symbols indicate internal characteristics.
Green symbols indicate external characteristics.



Sample Image Used

COLOR

D E F G H I J Faint Very Light Light

CLARITY

IF WS¹⁻² VS¹⁻² SI¹⁻² |¹⁻³

Internally Flawless	Very Very Slightly Included	Very Slightly Included	Slightly Included	Included
------------------------	--------------------------------	---------------------------	----------------------	----------

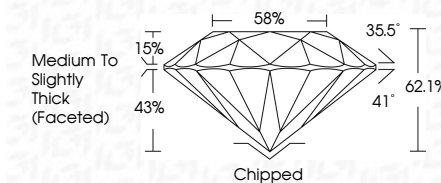
LABORATORY GROWN DIAMOND REPORT



May 10, 2025	
IGI Report Number	LG705506196
Description	LABORATORY GROWN DIAMOND
Shape and Cutting Style	ROUND BRILLIANT
Measurements	8.07 - 8.14 X 5.04 MM

GRADING RESULTS

Carat Weight	2.06 CARATS
Color Grade	FANCY INTENSE PINK
Clarity Grade	VS 2
Cut Grade	VERY GOOD



ADDITIONAL GRADING INFORMATION

Polish	GOOD
Symmetry	VERY GOOD
Fluorescence	SLIGHT
Inscription(s)	 LG705506196
<p>Comments: This Laboratory Grown Diamond was created by Chemical Vapor Deposition (CVD) growth process.</p> <p>Indications of post-growth treatment.</p>	



© IGI 2020, International Gemological Institute

FD - 10 20



THIS DOCUMENT WAS PRODUCED WITH THE FOLLOWING SECURITY MEASURES: SPECIAL DOCUMENT PAPER, INK SCREENS, WATERMARK, BACKGROUND DESIGNS, HOLOGRAM AND OTHER SECURITY FEATURES NOT LISTED AND DO EXCEED DOCUMENT SECURITY INDUSTRY GUIDELINE

www.igi.org

