



INTERNATIONAL GEMOLOGICAL INSTITUTE

ELECTRONIC COPY

LABORATORY GROWN DIAMOND REPORT

November 11, 2025

IGI Report Number

LG704592045

Description

LABORATORY GROWN DIAMOND

Shape and Cutting Style

PRINCESS CUT

Measurements

5.44 X 5.41 X 3.69 MM

GRADING RESULTS

Carat Weight

0.98 CARAT

Color Grade

D

Clarity Grade

VS 1

ADDITIONAL GRADING INFORMATION

Polish

EXCELLENT

Symmetry

EXCELLENT

Fluorescence

NONE

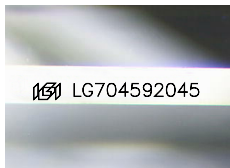
Inscription(s)

IGI LG704592045

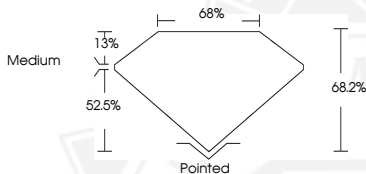
Comments: As Grown - No indication of post-growth treatment.

This Laboratory Grown Diamond was created by High Pressure High Temperature (HPHT) growth process.

Type II



Sample Image Used



November 11, 2025

IGI Report Number LG704592045

PRINCESS CUT

LABORATORY GROWN DIAMOND

5.44 X 5.41 X 3.69 MM

Carat Weight 0.98 CARAT

Color Grade D

Clarity Grade VS 1

Polish EXCELLENT

Symmetry EXCELLENT

Fluorescence NONE

Inscription(s) IGI LG704592045

Comments: As Grown - No indication of post-growth treatment. This Laboratory Grown Diamond was created by High Pressure High Temperature (HPHT) growth process. Type II



November 11, 2025

IGI Report Number LG704592045

PRINCESS CUT

LABORATORY GROWN DIAMOND

5.44 X 5.41 X 3.69 MM

Carat Weight 0.98 CARAT

Color Grade D

Clarity Grade VS 1

Polish EXCELLENT

Symmetry EXCELLENT

Fluorescence NONE

Inscription(s) IGI LG704592045

Comments: As Grown - No indication of post-growth treatment. This Laboratory Grown Diamond was created by High Pressure High Temperature (HPHT) growth process. Type II



THIS DOCUMENT WAS PRODUCED WITH THE FOLLOWING SECURITY MEASURES: SPECIAL DOCUMENT PAPER, INK SCREENS, WATERMARK, BACKGROUND DESIGNS, HOLOGRAM AND OTHER SECURITY FEATURES NOT LISTED AND DO EXCEED DOCUMENT SECURITY INDUSTRY GUIDELINES.

For terms & conditions and to verify this report, please visit www.igi.org