



ELECTRONIC COPY

LG704579820
Report verification at igi.org



May 10, 2025
IGI Report Number **LG704579820**
Description **LABORATORY GROWN DIAMOND**
Shape and Cutting Style **CUSHION MODIFIED BRILLIANT**
Measurements **13.76 X 9.63 X 6.50 MM**
GRADING RESULTS
Carat Weight **7.02 CARATS**
Color Grade **FANCY INTENSE BROWNISH PINK**
Clarity Grade **SI 1**

LABORATORY GROWN DIAMOND REPORT

May 10, 2025
IGI Report Number **LG704579820**
Description **LABORATORY GROWN DIAMOND**
Shape and Cutting Style **CUSHION MODIFIED BRILLIANT**
Measurements **13.76 X 9.63 X 6.50 MM**

GRADING RESULTS

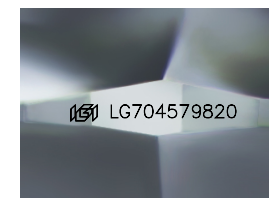
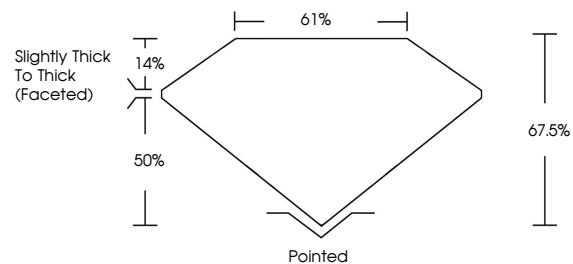
Carat Weight **7.02 CARATS**
Color Grade **FANCY INTENSE BROWNISH PINK**
Clarity Grade **SI 1**

ADDITIONAL GRADING INFORMATION

Polish **EXCELLENT**
Symmetry **EXCELLENT**
Fluorescence **SLIGHT**
Inscription(s) **IGI LG704579820**

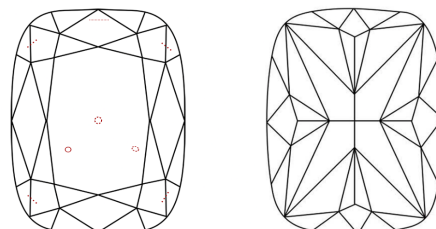
Comments: This Laboratory Grown Diamond was created by Chemical Vapor Deposition (CVD) growth process. Indications of post-growth treatment.

PROPORTIONS



Sample Image Used

CLARITY CHARACTERISTICS



KEY TO SYMBOLS

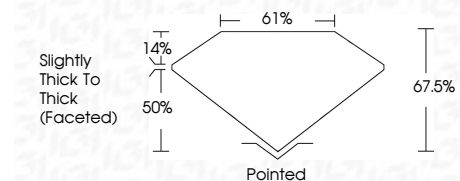
Red symbols indicate internal characteristics.
Green symbols indicate external characteristics.

COLOR

D E F G H I J Faint Very Light Light

CLARITY

IF	VS ¹⁻²	VS ¹⁻²	SI ¹⁻²	I ¹⁻³
Internally Flawless	Very Very Slightly Included	Very Slightly Included	Slightly Included	Included



ADDITIONAL GRADING INFORMATION

Polish **EXCELLENT**
Symmetry **EXCELLENT**
Fluorescence **SLIGHT**
Inscription(s) **IGI LG704579820**
Comments: This Laboratory Grown Diamond was created by Chemical Vapor Deposition (CVD) growth process. Indications of post-growth treatment.



May 10, 2025
IGI Report No LG704579820
CUSHION MODIFIED BRILLIANT

7.02 CARATS
FANCY INTENSE BROWNISH PINK
SI 1
67.05%
61%
Slightly Thick To Thick (Faceted)
Pointed
EXCELLENT
EXCELLENT
SLIGHT
IGI LG704579820

Comments: This Laboratory Grown Diamond was created by Chemical Vapor Deposition (CVD) growth process. Indications of post-growth treatment.