



**ELECTRONIC COPY**

LG704579741  
Report verification at igi.org



May 10, 2025

IGI Report Number **LG704579741**

Description **LABORATORY GROWN DIAMOND**

Shape and Cutting Style **ROUND BRILLIANT**

Measurements **8.72 - 8.78 X 5.37 MM**

**GRADING RESULTS**

Carat Weight **2.55 CARATS**

Color Grade **FANCY VIVID GREEN**

Clarity Grade **VVS 2**

Cut Grade **EXCELLENT**

May 10, 2025

IGI Report Number **LG704579741**

Description **LABORATORY GROWN DIAMOND**

Shape and Cutting Style **ROUND BRILLIANT**

Measurements **8.72 - 8.78 X 5.37 MM**

**GRADING RESULTS**

Carat Weight **2.55 CARATS**

Color Grade **FANCY VIVID GREEN**

Clarity Grade **VVS 2**

Cut Grade **EXCELLENT**

**ADDITIONAL GRADING INFORMATION**

Polish **VERY GOOD**

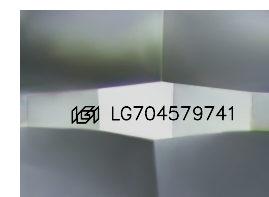
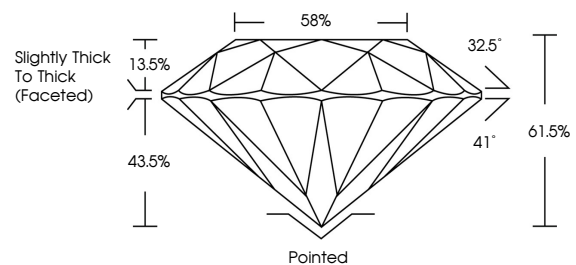
Symmetry **EXCELLENT**

Fluorescence **NONE**

Inscription(s) **IGI LG704579741**

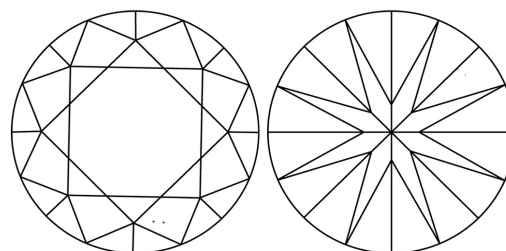
Comments: This Laboratory Grown Diamond was created by High Pressure High Temperature (HPHT) growth process. Indications of post-growth treatment.

**PROPORTIONS**



Sample Image Used

**CLARITY CHARACTERISTICS**



**KEY TO SYMBOLS**

Red symbols indicate internal characteristics.  
Green symbols indicate external characteristics.

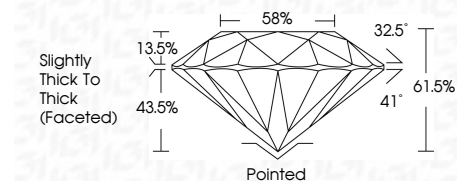
**COLOR**

D E F G H I J Faint Very Light Light

**CLARITY**

IF WS<sup>1-2</sup> VS<sup>1-2</sup> SI<sup>1-2</sup> I<sup>1-3</sup>

Internally Flawless Very Very Slightly Included Very Slightly Included Slightly Included Included



**ADDITIONAL GRADING INFORMATION**

Polish **VERY GOOD**

Symmetry **EXCELLENT**

Fluorescence **NONE**

Inscription(s) **IGI LG704579741**

Comments: This Laboratory Grown Diamond was created by High Pressure High Temperature (HPHT) growth process. Indications of post-growth treatment.



**IGI**



|                 |                           |              |                   |               |           |       |       |                                   |         |           |           |              |                 |
|-----------------|---------------------------|--------------|-------------------|---------------|-----------|-------|-------|-----------------------------------|---------|-----------|-----------|--------------|-----------------|
| May 10, 2025    | IGI Report No LG704579741 | 2.55 CARATS  | FANCY VIVID GREEN | VVS 2         | EXCELLENT | 61.5% | 58%   | Slightly Thick To Thick (Faceted) | Pointed | VERY GOOD | EXCELLENT | NONE         | IGI LG704579741 |
| ROUND BRILLIANT | 8.72 - 8.78 X 5.37 MM     | Carat Weight | Color Grade       | Clarity Grade | Cut Grade | Depth | Table | Girdle                            | Culet   | Polish    | Symmetry  | Fluorescence | Inscription(s)  |

Comments: This Laboratory Grown Diamond was created by High Pressure High Temperature (HPHT) growth process. Indications of post-growth treatment.