



ELECTRONIC COPY

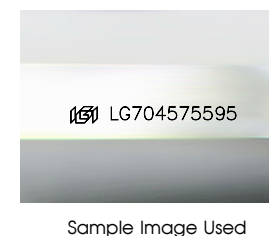
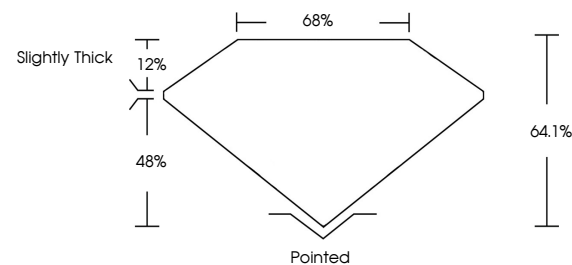
LG704575595
Report verification at igi.org



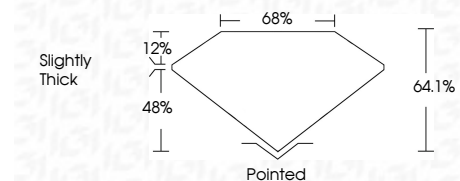
May 9, 2025
IGI Report Number LG704575595
Description LABORATORY GROWN DIAMOND
Shape and Cutting Style CUT CORNERED RECTANGULAR MODIFIED BRILLIANT
Measurements 12.10 X 8.34 X 5.35 MM
GRADING RESULTS
Carat Weight 5.10 CARATS
Color Grade FANCY VIVID BLUE
Clarity Grade VVS 2

May 9, 2025
IGI Report Number LG704575595
Description LABORATORY GROWN DIAMOND
Shape and Cutting Style CUT CORNERED RECTANGULAR MODIFIED BRILLIANT
Measurements 12.10 X 8.34 X 5.35 MM

PROPORTIONS



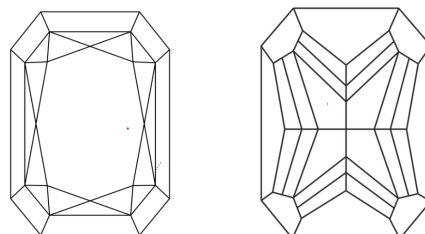
Sample Image Used



GRADING RESULTS

Carat Weight 5.10 CARATS
Color Grade FANCY VIVID BLUE
Clarity Grade VVS 2

CLARITY CHARACTERISTICS



COLOR

D E F G H I J Faint Very Light Light

CLARITY

IF VS 1-2 VS 1-2 SI 1-2 I 1-3
Internally Flawless Very Very Slightly Included Very Slightly Included Slightly Included Included

ADDITIONAL GRADING INFORMATION

Polish EXCELLENT
Symmetry EXCELLENT
Fluorescence NONE
Inscription(s) 1691 LG704575595
Comments: This Laboratory Grown Diamond was created by Chemical Vapor Deposition (CVD) growth process. Indications of post-growth treatment.

ADDITIONAL GRADING INFORMATION

Polish EXCELLENT
Symmetry EXCELLENT
Fluorescence NONE
Inscription(s) 1691 LG704575595

KEY TO SYMBOLS

Red symbols indicate internal characteristics.
Green symbols indicate external characteristics.



IGI

May 9, 2025
IGI Report No LG704575595
CUT CORNERED RECT. MODIFIED BRILLIANT
12.10 X 8.34 X 5.35 MM
5.10 CARATS
FANCY VIVID BLUE
VVS 2
64.1%
Slightly Thick
Pointed
EXCELLENT
EXCELLENT
NONE
1691 LG704575595
Comments: This Laboratory Grown Diamond was created by Chemical Vapor Deposition (CVD) growth process. Indications of post-growth treatment.