

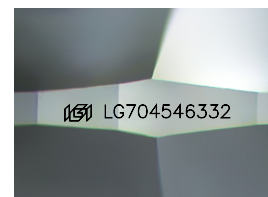
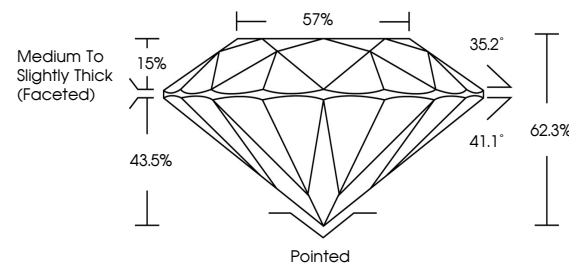


ELECTRONIC COPY

LABORATORY GROWN DIAMOND REPORT

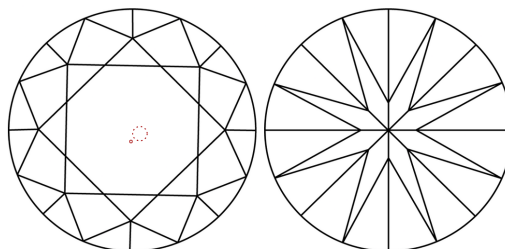
LG704546332
Report verification at igi.org

PROPORTIONS



Sample Image Used

CLARITY CHARACTERISTICS



KEY TO SYMBOLS

Red symbols indicate internal characteristics.
Green symbols indicate external characteristics.



www.igi.org

LABORATORY GROWN DIAMOND REPORT



June 25, 2025

IGI Report Number **LG704546332**

Description	LABORATORY GROWN DIAMOND
-------------	--------------------------

Shape and Cutting Style **ROUND BRILLIANT**

Measurements 12.24 - 12.29 X 7.65 MM

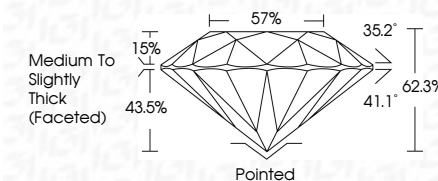
GRADING RESULTS

Carat Weight **7.06 CARATS**

Color Grade

Clarity Grade VS 2

Cut Grade **IDEAL**



ADDITIONAL GRADING INFORMATION

Polish EXCELLENT

Symmetry **EXCELLENT**Fluorescence NONEInscription(s) LG704546332

Comments: HEARTS & ARROWS

This Laboratory Grown Diamond was created by Chemical Vapor Deposition (CVD) growth process.
Type IIa



© IGI 2020, International Gemological Institute

FD - 10 20



THIS DOCUMENT WAS PRODUCED WITH THE FOLLOWING SECURITY MEASURES: SPECIAL DOCUMENT PAPER, INK SCREENS, WATERMARK, BACKGROUND DESIGNS, HOLOGRAM AND OTHER SECURITY FEATURES NOT LISTED AND DO EXCEED DOCUMENT SECURITY INDUSTRY GUIDELINES

June 25, 2025	IGI Report No. LG70454332	12.24 - 12.29 X 7.66 MM	7.05 CARATS	Vs 2	Pointed	Comments: HEART & ALOMVS Natural Diamond was graded by Chemical Vapor (CVD) growth process. Type IIa
ROUND BRILLIANT	Carat Weight	Color Grade	IDEAL	EXCELLENT	NONE	
		Clarity Grade	62.3%	EXCELLENT	1691 LG70454332	
		Cut Grade	57%	EXCELLENT		
		Table	Medium to Slightly Thick (faceted)	EXCELLENT		
		Girdle			Fluorescence	
					Inscriptions(s)	
					Culet	
					Polish	
					Symmetry	