



**ELECTRONIC COPY**

## LABORATORY GROWN DIAMOND REPORT

May 1, 2025	
IGI Report Number	LG704545856
Description	LABORATORY GROWN DIAMOND
Shape and Cutting Style	ROUND BRILLIANT
Measurements	6.54 - 6.59 X 4.03 MM

## GRADING RESULTS

Carat Weight	1.06 CARAT
Color Grade	E
Clarity Grade	VS 1
Cut Grade	IDEAL

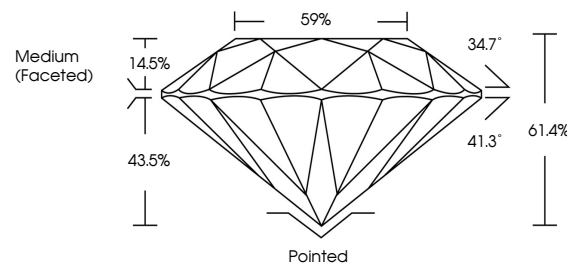
### ADDITIONAL GRADING INFORMATION

Polish	EXCELLENT
Symmetry	EXCELLENT
Fluorescence	NONE
Inscription(s)	LG704545856

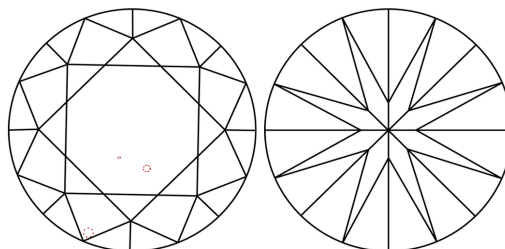
Comments: This Laboratory Grown Diamond was created by Chemical Vapor Deposition (CVD) growth process.  
Type IIa

LG704545856  
Report verification at [igi.org](https://igi.org)

## PROPORTIONS

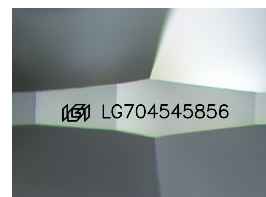


## CLARITY CHARACTERISTICS



## KEY TO SYMBOLS

Red symbols indicate internal characteristics.  
Green symbols indicate external characteristics.



Sample Image Used

## COLOR

D E F G H I J Faint Very Light Light

## CLARITY

IF                      WS<sup>1-2</sup>                      VS<sup>1-2</sup>                      SI<sup>1-2</sup>                      |<sup>1-3</sup>

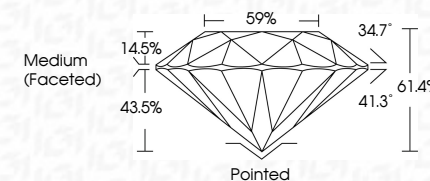
Internally Flawless	Very Very Slightly Included	Very Slightly Included	Slightly Included	Included
------------------------	--------------------------------	---------------------------	----------------------	----------



May 1, 2025	
IGI Report Number	LG704545856
Description	LABORATORY GROWN DIAMOND
Shape and Cutting Style	ROUND BRILLIANT
Measurements	6.54 - 6.59 X 4.03 MM

## GRADING RESULTS

Carat Weight	1.06 CARAT
Color Grade	E
Clarity Grade	VS 1
Cut Grade	IDEAL



### ADDITIONAL GRADING INFORMATION

Polish	EXCELLENT
Symmetry	EXCELLENT
Fluorescence	NONE
Inscription(s)	 LG704545856
<p>Comments: This Laboratory Grown Diamond was created by Chemical Vapor Deposition (CVD) growth process.</p> <p>Type IIa</p>	



IG



© IGI 2020, International Gemological Institute

FD - 10 20



THIS DOCUMENT WAS PRODUCED WITH THE FOLLOWING SECURITY MEASURES: SPECIAL DOCUMENT PAPER, INK SCREENS, WATERMARK, BACKGROUND DESIGNS, HOLOGRAM AND OTHER SECURITY FEATURES NOT LISTED AND DO EXCEED DOCUMENT SECURITY INDUSTRY GUIDELINE

**www.igi.org**

May 1, 2005	Report No. LG70454886	
ROUND BRILLIANT		
1.06 CARAT		
Color Weight	VS 1	Polished
Color Grade	IDEAL	EXCELLENT
Clarity Grade	61.4%	BETTER
Cut Grade	59%	NONE
Depth	Medium (Faceted)	
Table		
Girdle		
Culet		
Polish		
Symmetry		
Fluorescence		
Inscriptions(s)		
		1691 LG70454886
<p>Comments:          This is a Laboratory Grown Diamond was          identified by Chemical Vapor Deposition          (CVD) growth process.          Type IIa</p>		