



**ELECTRONIC COPY**

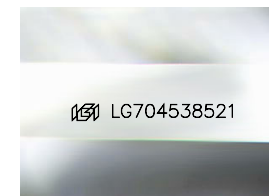
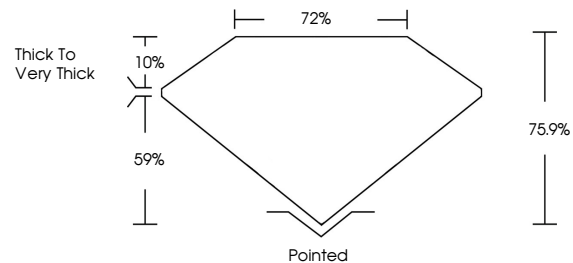
LG704538521  
Report verification at [igi.org](http://igi.org)



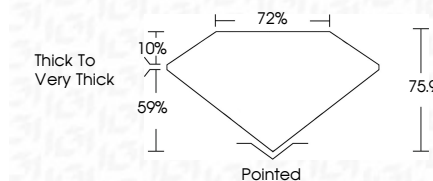
May 9, 2025  
IGI Report Number **LG704538521**  
Description **LABORATORY GROWN DIAMOND**  
Shape and Cutting Style **PRINCESS CUT**  
Measurements **5.83 X 5.73 X 4.35 MM**  
**GRADING RESULTS**  
Carat Weight **1.32 CARAT**  
Color Grade **FANCY VIVID PINK**  
Clarity Grade **VS 1**

May 9, 2025  
IGI Report Number **LG704538521**  
Description **LABORATORY GROWN DIAMOND**  
Shape and Cutting Style **PRINCESS CUT**  
Measurements **5.83 X 5.73 X 4.35 MM**  
**GRADING RESULTS**  
Carat Weight **1.32 CARAT**  
Color Grade **FANCY VIVID PINK**  
Clarity Grade **VS 1**

**PROPORTIONS**



Sample Image Used



**ADDITIONAL GRADING INFORMATION**

Polish **EXCELLENT**  
Symmetry **VERY GOOD**  
Fluorescence **SLIGHT**  
Inscription(s) **IGI LG704538521**

Comments: This Laboratory Grown Diamond was created by Chemical Vapor Deposition (CVD) growth process. Indications of post-growth treatment.

**ADDITIONAL GRADING INFORMATION**

Polish **EXCELLENT**  
Symmetry **VERY GOOD**  
Fluorescence **SLIGHT**  
Inscription(s) **IGI LG704538521**

Comments: This Laboratory Grown Diamond was created by Chemical Vapor Deposition (CVD) growth process. Indications of post-growth treatment.

**COLOR**

D E F G H I J Faint Very Light Light

**CLARITY**

IF	VS <sup>1-2</sup>	VS <sup>1-2</sup>	SI <sup>1-2</sup>	I <sup>1-3</sup>
Internally Flawless	Very Very Slightly Included	Very Slightly Included	Slightly Included	Included



**IGI**



May 9, 2025  
IGI Report No **LG704538521**  
**PRINCESS CUT**  
**1.32 CARAT**  
Carat Weight **5.83 X 5.73 X 4.35 MM**  
Color Grade **FANCY VIVID PINK**  
Clarity Grade **VS 1**  
Depth **75.9%**  
Table **72%**  
Girdle **Thick To Very Thick**  
Culet **Pointed**  
Polish **EXCELLENT**  
Symmetry **VERY GOOD**  
Fluorescence **SLIGHT**  
Inscription(s) **IGI LG704538521**  
Comments: This Laboratory Grown Diamond was created by Chemical Vapor Deposition (CVD) growth process. Indications of post-growth treatment.