



ELECTRONIC COPY

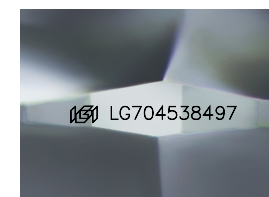
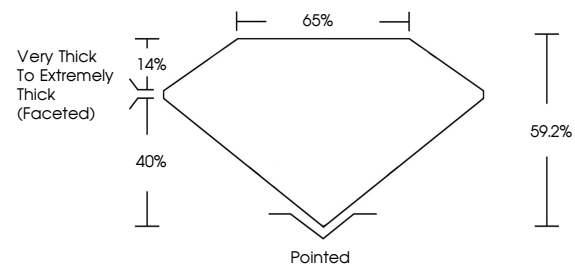
LG704538497
Report verification at igi.org



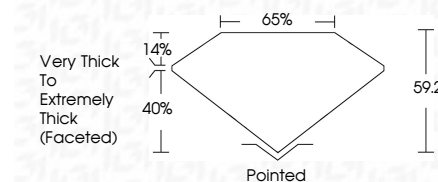
May 5, 2025
IGI Report Number **LG704538497**
Description **LABORATORY GROWN DIAMOND**
Shape and Cutting Style **SQUARE CUSHION MODIFIED BRILLIANT**
Measurements **13.71 X 13.30 X 7.87 MM**
GRADING RESULTS
Carat Weight **12.65 CARATS**
Color Grade **FANCY INTENSE YELLOW**
Clarity Grade **VS 1**

May 5, 2025
IGI Report Number **LG704538497**
Description **LABORATORY GROWN DIAMOND**
Shape and Cutting Style **SQUARE CUSHION MODIFIED BRILLIANT**
Measurements **13.71 X 13.30 X 7.87 MM**
GRADING RESULTS
Carat Weight **12.65 CARATS**
Color Grade **FANCY INTENSE YELLOW**
Clarity Grade **VS 1**

PROPORTIONS



Sample Image Used



ADDITIONAL GRADING INFORMATION

Polish **EXCELLENT**
Symmetry **EXCELLENT**
Fluorescence **VERY SLIGHT**
Inscription(s) **IGI LG704538497**

Comments: This Laboratory Grown Diamond was created by Chemical Vapor Deposition (CVD) growth process.
Indications of post-growth treatment.

ADDITIONAL GRADING INFORMATION

Polish **EXCELLENT**
Symmetry **EXCELLENT**
Fluorescence **VERY SLIGHT**
Inscription(s) **IGI LG704538497**

Comments: This Laboratory Grown Diamond was created by Chemical Vapor Deposition (CVD) growth process.
Indications of post-growth treatment.

COLOR

D E F G H I J Faint Very Light Light

CLARITY

IF VS¹⁻² VS¹⁻² SI¹⁻² I¹⁻³

Internally Flawless Very Very Slightly Included Very Slightly Included Slightly Included Included



IGI



May 5, 2025
IGI Report No **LG704538497**
SQUARE CUSHION MODIFIED BRILLIANT
13.71 X 13.30 X 7.87 MM
Carat Weight **12.65 CARATS**
Color Grade **FANCY INTENSE YELLOW**
Clarity Grade **VS 1**
Table **65%**
Depth **59.2%**
Girdle **Very Thick to Extremely Thick (Faceted)**
Culet **Pointed**
Polish **EXCELLENT**
Symmetry **EXCELLENT**
Fluorescence **VERY SLIGHT**
Inscription(s) **IGI LG704538497**

Comments: This Laboratory Grown Diamond was created by Chemical Vapor Deposition (CVD) growth process.
Indications of post-growth treatment.