



**ELECTRONIC COPY**

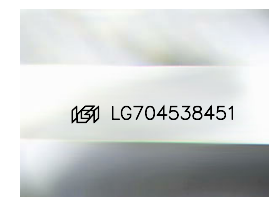
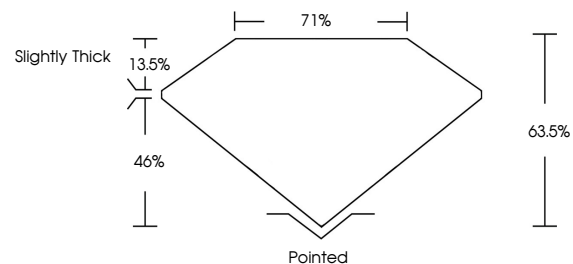
LG704538451  
Report verification at [igi.org](http://igi.org)



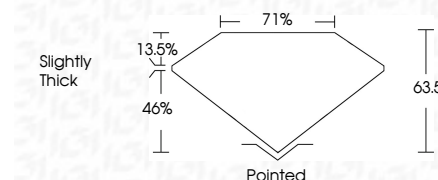
May 9, 2025  
IGI Report Number **LG704538451**  
Description **LABORATORY GROWN DIAMOND**  
Shape and Cutting Style **CUT CORNERED  
RECTANGULAR MODIFIED  
BRILLIANT**  
Measurements **12.26 X 8.52 X 5.41 MM**  
**GRADING RESULTS**  
Carat Weight **5.39 CARATS**  
Color Grade **FANCY VIVID PINK**  
Clarity Grade **VS 1**

May 9, 2025  
IGI Report Number **LG704538451**  
Description **LABORATORY GROWN DIAMOND**  
Shape and Cutting Style **CUT CORNERED RECTANGULAR  
MODIFIED BRILLIANT**  
Measurements **12.26 X 8.52 X 5.41 MM**  
**GRADING RESULTS**  
Carat Weight **5.39 CARATS**  
Color Grade **FANCY VIVID PINK**  
Clarity Grade **VS 1**

**PROPORTIONS**



Sample Image Used



**ADDITIONAL GRADING INFORMATION**

Polish **VERY GOOD**  
Symmetry **EXCELLENT**  
Fluorescence **SLIGHT**  
Inscription(s) **IGI LG704538451**

Comments: This Laboratory Grown Diamond was created by Chemical Vapor Deposition (CVD) growth process. Indications of post-growth treatment.

**COLOR**

D E F G H I J Faint Very Light Light

**CLARITY**

IF	WS <sup>1-2</sup>	VS <sup>1-2</sup>	SI <sup>1-2</sup>	I <sup>1-3</sup>
Internally Flawless	Very Very Slightly Included	Very Slightly Included	Slightly Included	Included

**ADDITIONAL GRADING INFORMATION**

Polish **VERY GOOD**  
Symmetry **EXCELLENT**  
Fluorescence **SLIGHT**  
Inscription(s) **IGI LG704538451**  
Comments: This Laboratory Grown Diamond was created by Chemical Vapor Deposition (CVD) growth process. Indications of post-growth treatment.



**IGI**



May 9, 2025  
IGI Report No **LG704538451**  
**CUT CORNERED RECT. MODIFIED BRILLIANT**  
**12.26 X 8.52 X 5.41 MM**  
Carat Weight **5.39 CARATS**  
Color Grade **FANCY VIVID PINK**  
Clarity Grade **VS 1**  
Depth **63.5%**  
Table **71%**  
Girdle **Slightly Thick**  
Culet **Pointed**  
Polish **VERY GOOD**  
Symmetry **EXCELLENT**  
Fluorescence **SLIGHT**  
Inscription(s) **IGI LG704538451**

Comments: This Laboratory Grown Diamond was created by Chemical Vapor Deposition (CVD) growth process. Indications of post-growth treatment.