



**ELECTRONIC COPY**

## LABORATORY GROWN DIAMOND REPORT

May 7, 2025	
IGI Report Number	LG704537810
Description	LABORATORY GROWN DIAMOND
Shape and Cutting Style	CUSHION MODIFIED BRILLIANT
Measurements	10.22 X 7.57 X 5.10 MM

## GRADING RESULTS

Carat Weight	3.01 CARATS
Color Grade	F
Clarity Grade	VS 1

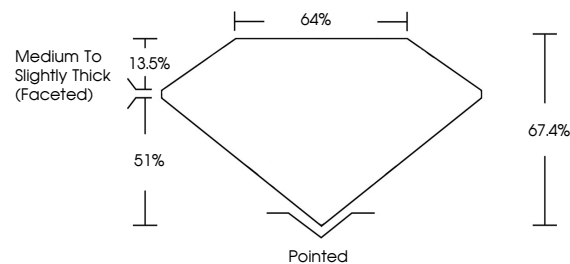
### ADDITIONAL GRADING INFORMATION

Polish	EXCELLENT
Symmetry	EXCELLENT
Fluorescence	NONE
Inscription(s)	 LG704537810

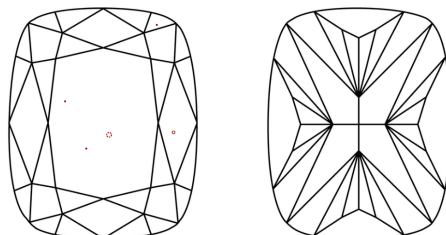
Comments: This Laboratory Grown Diamond was created by Chemical Vapor Deposition (CVD) growth process.  
Type IIa

LG704537810  
Report verification at [igi.org](https://igi.org)

## PROPORTIONS

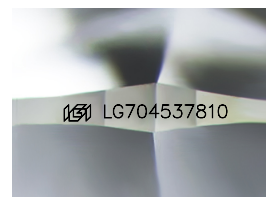


## CLARITY CHARACTERISTICS



## KEY TO SYMBOLS

Red symbols indicate internal characteristics.  
Green symbols indicate external characteristics.



Sample Image Used

## COLOR

D E F G H I J Faint Very Light Light

## CLARITY

IF      VWS<sup>1-2</sup>      VS<sup>1-2</sup>      SI<sup>1-2</sup>      I<sup>1-3</sup>

Internally Flawless	Very Very Slightly Included	Very Slightly Included	Slightly Included	Included
------------------------	--------------------------------	---------------------------	----------------------	----------



© IGI 2020, International Gemological Institute

FD - 10 20

**www.igi.org**

## LABORATORY GROWN DIAMOND REPORT



May 7, 2025

IGI Report Number **LG704537810**

Description	LABORATORY GROWN DIAMOND
-------------	--------------------------

Shape and Cutting Style **CUSHION MODIFIED  
BRILLIANT**

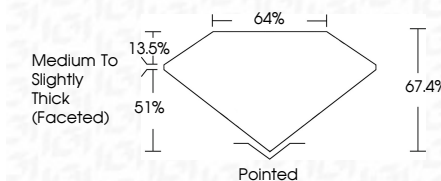
Measurements **10.22 X 7.57 X 5.10 MM**

## GRADING RESULTS

Carat Weight **3.01 CARATS**

Color Grade	F
-------------	---

Clarity Grade VS 1



### ADDITIONAL GRADING INFORMATION

Polish **EXCELLENCE**Symmetry **EXCELLEN**

Fluorescence NONI

Inscription(s)  LG704537810

Comments: This Laboratory Grown Diamond was created by Chemical Vapor Deposition (CVD) growth process.  
Type IIa



May 7, 2005	GI Report No. G704537810	3.01 CARATS
	CUSHION MODIFIED BRILLIANT	F
	10.02 X 7.57 X 5.10 MM	V8 1
		67.4%
		64%
	Medium to slightly thick (faceted)	
		Pointed
		EXCELLENT
		EXCELLENT
		NONE
		#81 G704537810

Comments: Very Green Diamond was created by Chemical Vapor Deposition (CVD) growth process.

Type IIa