



**ELECTRONIC COPY**

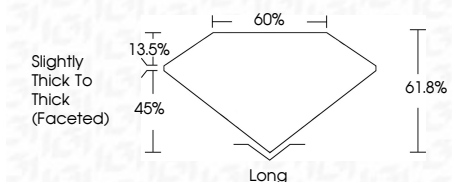
LG704530207  
Report verification at igi.org



May 8, 2025  
IGI Report Number **LG704530207**  
Description **LABORATORY GROWN DIAMOND**  
Shape and Cutting Style **PEAR STEP CUT**  
Measurements **11.66 X 7.47 X 4.62 MM**

**GRADING RESULTS**

Carat Weight **2.60 CARATS**  
Color Grade **E**  
Clarity Grade **VS 1**



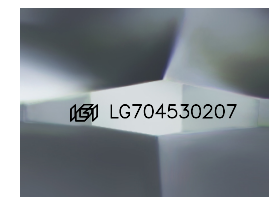
**ADDITIONAL GRADING INFORMATION**

Polish **EXCELLENT**  
Symmetry **EXCELLENT**  
Fluorescence **NONE**  
Inscription(s) **IGI LG704530207**  
Comments: This Laboratory Grown Diamond was created by Chemical Vapor Deposition (CVD) growth process. Type IIa



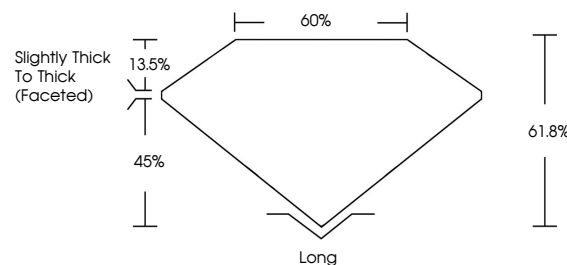
**IGI**

May 8, 2025  
IGI Report No. LG704530207  
**PEAR STEP CUT**  
2.60 CARATS  
E  
11.66 X 7.47 X 4.62 MM  
Carat Weight  
Color Grade  
Clarity Grade  
Depth  
Table  
Girdle  
Slightly Thick To Thick (Faceted)  
61.0%  
60%  
Long  
EXCELLENT  
EXCELLENT  
NONE  
IGI LG704530207  
Comments: This Laboratory Grown Diamond was created by Chemical Vapor Deposition (CVD) growth process. Type IIa

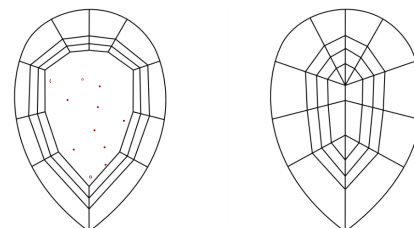


Sample Image Used

**PROPORTIONS**



**CLARITY CHARACTERISTICS**



**KEY TO SYMBOLS**

Red symbols indicate internal characteristics.  
Green symbols indicate external characteristics.

**COLOR**

D E F G H I J Faint Very Light Light

**CLARITY**

IF	WS <sup>1-2</sup>	VS <sup>1-2</sup>	SI <sup>1-2</sup>	I <sup>1-3</sup>
Internally Flawless	Very Very Slightly Included	Very Slightly Included	Slightly Included	Included

