



**ELECTRONIC COPY**

LG704517105  
Report verification at igi.org



May 15, 2025

IGI Report Number **LG704517105**

Description **LABORATORY GROWN DIAMOND**

Shape and Cutting Style **EMERALD CUT**

Measurements **15.07 X 9.89 X 6.37 MM**

**GRADING RESULTS**

Carat Weight **10.08 CARATS**

Color Grade **FANCY VIVID BLUE**

Clarity Grade **VVS 2**

**LABORATORY GROWN DIAMOND REPORT**

May 15, 2025

IGI Report Number **LG704517105**

Description **LABORATORY GROWN DIAMOND**

Shape and Cutting Style **EMERALD CUT**

Measurements **15.07 X 9.89 X 6.37 MM**

**GRADING RESULTS**

Carat Weight **10.08 CARATS**

Color Grade **FANCY VIVID BLUE**

Clarity Grade **VVS 2**

**ADDITIONAL GRADING INFORMATION**

Polish **EXCELLENT**

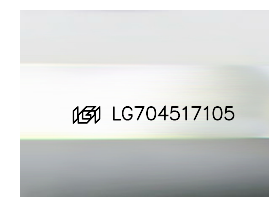
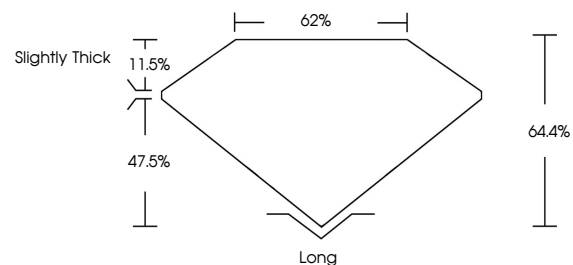
Symmetry **EXCELLENT**

Fluorescence **NONE**

Inscription(s) **IGI LG704517105**

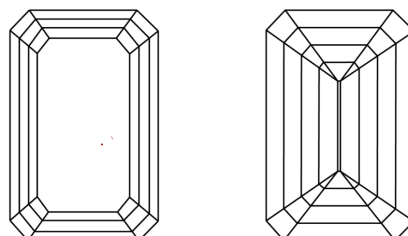
Comments: This Laboratory Grown Diamond was created by Chemical Vapor Deposition (CVD) growth process. Indications of post-growth treatment.

**PROPORTIONS**



Sample Image Used

**CLARITY CHARACTERISTICS**



**KEY TO SYMBOLS**

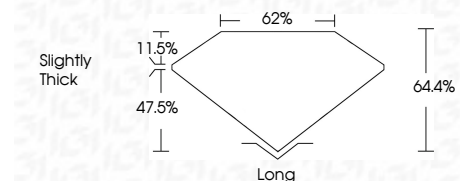
Red symbols indicate internal characteristics.  
Green symbols indicate external characteristics.

**COLOR**

D E F G H I J Faint Very Light Light

**CLARITY**

IF	VS <sup>1-2</sup>	VS <sup>1-2</sup>	SI <sup>1-2</sup>	I <sup>1-3</sup>
Internally Flawless	Very Very Slightly Included	Very Slightly Included	Slightly Included	Included



**ADDITIONAL GRADING INFORMATION**

Polish **EXCELLENT**

Symmetry **EXCELLENT**

Fluorescence **NONE**

Inscription(s) **IGI LG704517105**

Comments: This Laboratory Grown Diamond was created by Chemical Vapor Deposition (CVD) growth process. Indications of post-growth treatment.



May 15, 2025	10.08 CARATS	EMERALD CUT	Long
IGI Report No LG704517105	FANCY VIVID BLUE	VVS 2	EXCELLENT
15.07 X 9.89 X 6.37 MM	VVS 2	64.4%	EXCELLENT
Color Grade	62%	Slightly Thick	NONE
Clarity Grade			IGI LG704517105
Depth			
Table			
Girdle			
Culet			
Polish			
Symmetry			
Fluorescence			
Inscription(s)			

Comments: This Laboratory Grown Diamond was created by Chemical Vapor Deposition (CVD) growth process. Indications of post-growth treatment.