



ELECTRONIC COPY

LG704514156
Report verification at igi.org



May 9, 2025

IGI Report Number **LG704514156**

Description **LABORATORY GROWN DIAMOND**

Shape and Cutting Style **ROUND BRILLIANT**

Measurements **6.54 - 6.58 X 4.04 MM**

GRADING RESULTS

Carat Weight **1.06 CARAT**

Color Grade **FANCY VIVID PINK**

Clarity Grade **VVS 2**

Cut Grade **IDEAL**

May 9, 2025
IGI Report Number **LG704514156**
Description **LABORATORY GROWN DIAMOND**
Shape and Cutting Style **ROUND BRILLIANT**
Measurements **6.54 - 6.58 X 4.04 MM**

GRADING RESULTS

Carat Weight **1.06 CARAT**

Color Grade **FANCY VIVID PINK**

Clarity Grade **VVS 2**

Cut Grade **IDEAL**

ADDITIONAL GRADING INFORMATION

Polish **VERY GOOD**

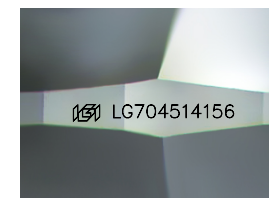
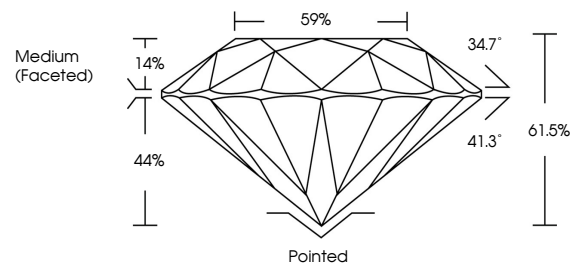
Symmetry **EXCELLENT**

Fluorescence **SLIGHT**

Inscription(s) **IGI LG704514156**

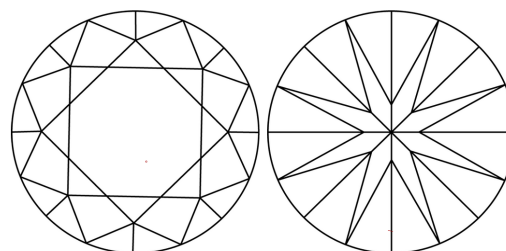
Comments: This Laboratory Grown Diamond was created by Chemical Vapor Deposition (CVD) growth process.
Indications of post-growth treatment.

PROPORTIONS



Sample Image Used

CLARITY CHARACTERISTICS



KEY TO SYMBOLS

Red symbols indicate internal characteristics.
Green symbols indicate external characteristics.

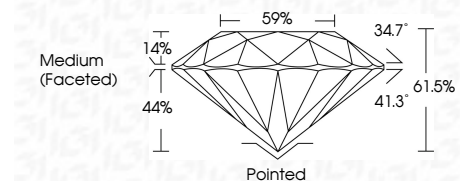
COLOR

D E F G H I J Faint Very Light Light

CLARITY

IF VS¹⁻² VS¹⁻² SI¹⁻² I¹⁻³

Internally Flawless Very Very Slightly Included Very Slightly Included Slightly Included Included



ADDITIONAL GRADING INFORMATION

Polish **VERY GOOD**

Symmetry **EXCELLENT**

Fluorescence **SLIGHT**

Inscription(s) **IGI LG704514156**

Comments: This Laboratory Grown Diamond was created by Chemical Vapor Deposition (CVD) growth process.
Indications of post-growth treatment.



May 9, 2025	IGI Report No LG704514156	1.06 CARAT	FANCY VIVID PINK	VVS 2	IDEAL	61.5%	59%	Medium (Faceted)	Pointed	VERY GOOD	EXCELLENT	SLIGHT	IGI LG704514156
ROUND BRILLIANT	6.54 - 6.58 X 4.04 MM	Color Grade	Clarity Grade	Cut Grade	Depth	Table	Girdle		Culet	Polish	Symmetry	Fluorescence	Inscription(s)

Comments: This Laboratory Grown Diamond was created by Chemical Vapor Deposition (CVD) growth process.
Indications of post-growth treatment.