

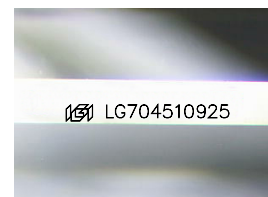
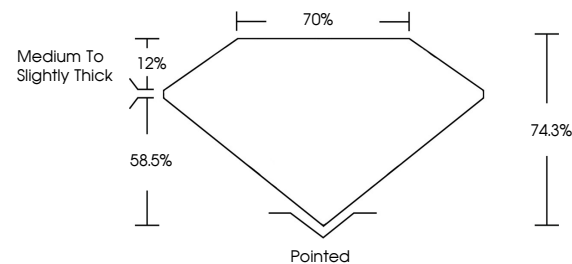


**ELECTRONIC COPY**

## LABORATORY GROWN DIAMOND REPORT

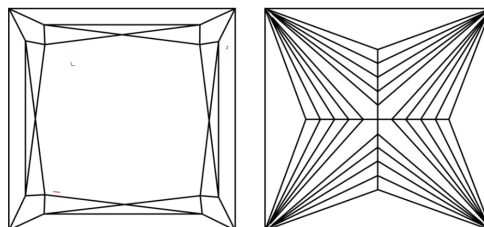
LG704510925  
Report verification at [igi.org](https://igi.org)

## PROPORTIONS



Sample Image Used

## CLARITY CHARACTERISTICS



## KEY TO SYMBOLS

Red symbols indicate internal characteristics.  
Green symbols indicate external characteristics.

## COLOR

D E F G H I J Faint Very Light Light

## CLARITY

IF	VS <sup>1-2</sup>	VS <sup>1-2</sup>	SI <sup>1-2</sup>	I <sup>1-3</sup>
Internally Flawless	Very Very Slightly Included	Very Slightly Included	Slightly Included	Included

## LABORATORY GROWN DIAMOND REPORT



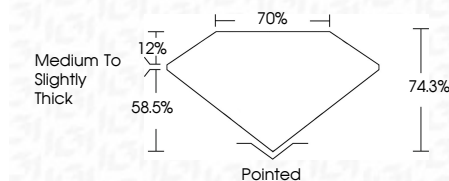
May 9, 2025

IGI Report Number **LG704510925**Description **LABORATORY GROWN DIAMOND**Shape and Cutting Style **PRINCESS CUT**

Measurements **6.16 X 6.15 X 4.57 MM**

## GRADING RESULTS

Carat Weight **1.50 CARAT**

Color Grade **FANCY VIVID PINK**Clarity Grade **VVS 2**

### ADDITIONAL GRADING INFORMATION

Polish EXCELLENT

Symmetry **EXCELLENT**

Fluorescence SLIGHT

Inscription(s)  LG704510925

Comments: This Laboratory Grown Diamond was created by Chemical Vapor Deposition (CVD) growth process.  
Indications of post-growth treatment.



© IGI 2020, International Gemological Institute

FD - 10 20

**www.igi.org**

THIS DOCUMENT WAS PRODUCED WITH THE FOLLOWING SECURITY MEASURES: SPECIAL DOCUMENT PAPER, INK SCREENS, WATERMARK BACKGROUND DESIGNS, HOLOGRAM AND OTHER SECURITY FEATURES NOT LISTED AND DO EXCEED DOCUMENT SECURITY INDUSTRY GUIDELINES

May 9, 2025  
 IGI Report No LG704510925  
 PRINCESS CLIT

3.6 X 6.15 X 4.57 MM		1.50 CARAT
Carat Weight		FANCY VIVID PINK
Color Grade		VVS 2
Clarity Grade		74.5%
Depth		70%
Table		Medium To Slightly Thick
Girdle		Pointed
Quiet		EXCELLENT
Polish		EXCELLENT
Symmetry		SLIGHT
Fluorescence		4481 (7/15/1925)
Proportions (%)		

**Comments:**  
This Laboratory Grown Diamond was  
created by Chemical Vapor Deposition  
(CVD) growth process.