



ELECTRONIC COPY

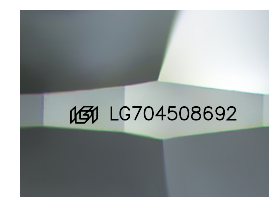
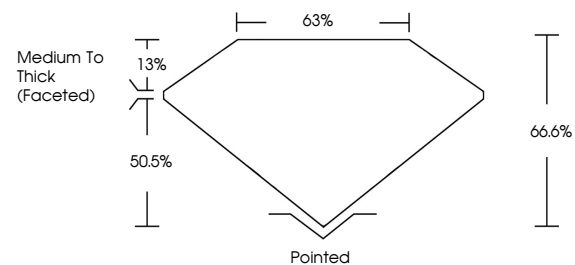
LG704508692
Report verification at igi.org



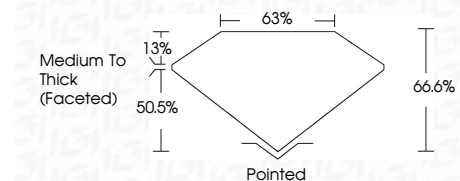
May 6, 2025
IGI Report Number LG704508692
Description LABORATORY GROWN DIAMOND
Shape and Cutting Style CUSHION MODIFIED BRILLIANT
Measurements 10.22 X 7.63 X 5.08 MM
GRADING RESULTS
Carat Weight 3.09 CARATS
Color Grade D
Clarity Grade SI 1

May 6, 2025
IGI Report Number LG704508692
Description LABORATORY GROWN DIAMOND
Shape and Cutting Style CUSHION MODIFIED BRILLIANT
Measurements 10.22 X 7.63 X 5.08 MM

PROPORTIONS



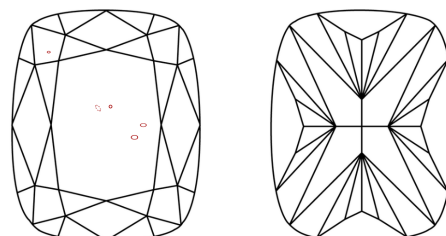
Sample Image Used



GRADING RESULTS

Carat Weight 3.09 CARATS
Color Grade D
Clarity Grade SI 1

CLARITY CHARACTERISTICS



KEY TO SYMBOLS

Red symbols indicate internal characteristics.
Green symbols indicate external characteristics.

ADDITIONAL GRADING INFORMATION

Polish EXCELLENT
Symmetry EXCELLENT
Fluorescence NONE
Inscription(s) IGI LG704508692

Comments: This Laboratory Grown Diamond was created by Chemical Vapor Deposition (CVD) growth process. Type IIa

COLOR

D E F G H I J Faint Very Light Light

CLARITY

IF VS 1-2 VS 1-2 SI 1-2 I 1-3
Internally Flawless Very Very Slightly Included Very Slightly Included Slightly Included Included

ADDITIONAL GRADING INFORMATION

Polish EXCELLENT
Symmetry EXCELLENT
Fluorescence NONE
Inscription(s) IGI LG704508692
Comments: This Laboratory Grown Diamond was created by Chemical Vapor Deposition (CVD) growth process. Type IIa



May 6, 2025
IGI Report No LG704508692
CUSHION MODIFIED BRILLIANT
10.22 X 7.63 X 5.08 MM
3.09 CARATS
D
SI 1
66.6%
50.5%
Medium To Thick (Faceted)
Pointed
EXCELLENT
EXCELLENT
NONE
IGI LG704508692
Comments: This Laboratory Grown Diamond was created by Chemical Vapor Deposition (CVD) growth process. Type IIa