



**INTERNATIONAL  
GEMOLOGICAL  
INSTITUTE**

**ELECTRONIC COPY**

LG703509854  
Report verification at [igi.org](https://igi.org)

LABORATORY GROWN DIAMOND REPORT



May 1, 2025

IGI Report Number **LG703509854**

Description	LABORATORY GROWN DIAMOND
-------------	--------------------------

Shape and Cutting Style **ROUND BRILLIANT**

Measurements 7.39 - 7.44 X 4.64 MM

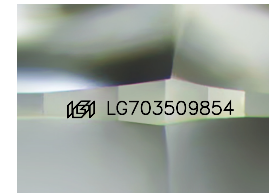
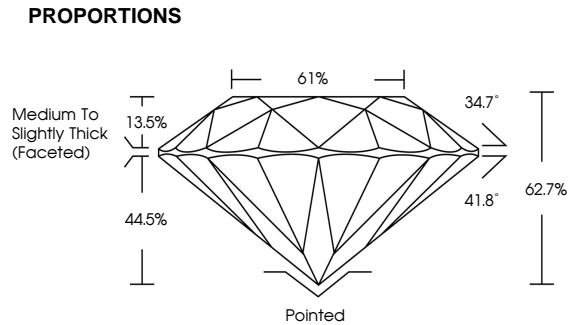
## GRADING RESULTS

Carat Weight **1.58 CARAT**

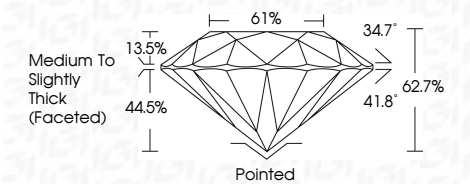
Color Grade **D**

Clarity Grade VS 1

Cut Grade **EXCELLENT**



Sample Image Used



**COLOR**

D E F G H I J Faint Very Light Light

## CLARITY

IF                      WS<sup>1-2</sup>                      VS<sup>1-2</sup>                      SI<sup>1-2</sup>                      I<sup>1-3</sup>

Internally Flawless	Very Very Slightly Included	Very Slightly Included	Slightly Included	Included
------------------------	--------------------------------	---------------------------	----------------------	----------



© IGI 2020, International Gemological Institute

FD - 10 20

www.igi.org



THIS DOCUMENT WAS PRODUCED WITH THE FOLLOWING SECURITY MEASURES: SPECIAL DOCUMENT PAPER, INK SCREENS, WATERMARK, BACKGROUND DESIGNS, HOLOGRAM AND OTHER SECURITY FEATURES NOT LISTED AND DO EXCEED DOCUMENT SECURITY INDUSTRY GUIDELINES



May 1, 2005	Color Weight	Carat Weight	1.58 CARAT
GI Report No. I2703509854	Color Grade		D
ROUND BRILLIANT	Clarity Grade	Vs 1	
	Cut Grade	EXCELLENT	
	Depth	62.7%	
	Table	61%	
	Grade	Medium to Slightly Thick Faceted	
	Culet	Pointed	
	Polish	EXCELLENT	
	Symmetry	EXCELLENT	
	Fluorescence	NONE	
	Inscription(s)		
			IGI L67703509854
	Comments:	This Laboratory Grown Diamond was created by Chemical Vapor Deposition (CVD) growth process.	
	Type IIA		