



ELECTRONIC COPY

LABORATORY GROWN DIAMOND REPORT

May 4, 2025
IGI Report Number LG703502246
Description LABORATORY GROWN DIAMOND
Shape and Cutting Style CUT CORNERED RECTANGULAR MODIFIED BRILLIANT
Measurements 11.12 X 7.88 X 5.33 MM

GRADING RESULTS

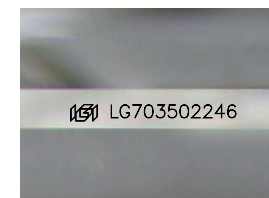
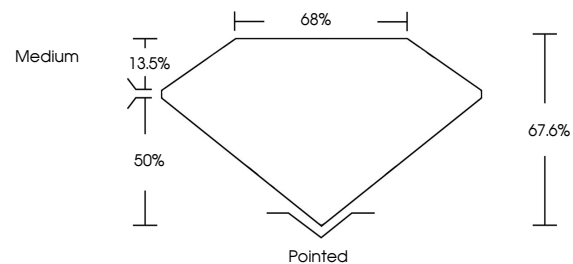
Carat Weight 4.10 CARATS
Color Grade D
Clarity Grade VS 2

ADDITIONAL GRADING INFORMATION

Polish EXCELLENT
Symmetry EXCELLENT
Fluorescence NONE
Inscription(s) IGI LG703502246

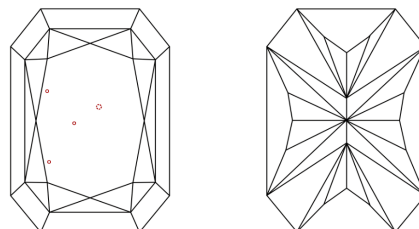
Comments: This Laboratory Grown Diamond was created by Chemical Vapor Deposition (CVD) growth process.
Type IIa

PROPORTIONS



Sample Image Used

CLARITY CHARACTERISTICS



KEY TO SYMBOLS

Red symbols indicate internal characteristics.
Green symbols indicate external characteristics.

COLOR

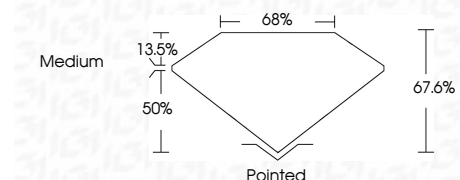
D E F G H I J Faint Very Light Light

CLARITY

IF WS¹⁻² VS¹⁻² SI¹⁻² I¹⁻³
Internally Flawless Very Very Slightly Included Very Slightly Included Slightly Included Included



May 4, 2025
IGI Report Number LG703502246
Description LABORATORY GROWN DIAMOND
Shape and Cutting Style CUT CORNERED RECTANGULAR MODIFIED BRILLIANT
Measurements 11.12 X 7.88 X 5.33 MM
GRADING RESULTS
Carat Weight 4.10 CARATS
Color Grade D
Clarity Grade VS 2



ADDITIONAL GRADING INFORMATION

Polish EXCELLENT
Symmetry EXCELLENT
Fluorescence NONE
Inscription(s) IGI LG703502246
Comments: This Laboratory Grown Diamond was created by Chemical Vapor Deposition (CVD) growth process.
Type IIa



May 4, 2025
IGI Report No LG703502246
CUT CORNERED RECT. MODIFIED BRILLIANT
4.10 CARATS
D
4.10 CARATS
D
VS 2
67.6%
68%
Medium
Pointed
EXCELLENT
EXCELLENT
NONE
IGI LG703502246
Comments: This Laboratory Grown Diamond was created by Chemical Vapor Deposition (CVD) growth process.
Type IIa