



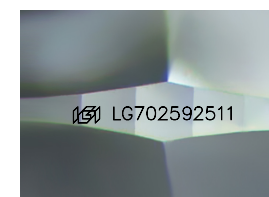
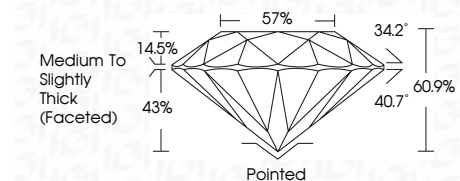
ELECTRONIC COPY

LG702592511
Report verification at igi.org



May 7, 2025
IGI Report Number LG702592511
Description LABORATORY GROWN DIAMOND
Shape and Cutting Style ROUND BRILLIANT
Measurements 11.04 - 11.06 X 6.73 MM

GRADING RESULTS
Carat Weight 5.01 CARATS
Color Grade E
Clarity Grade VS 2
Cut Grade IDEAL



Sample Image Used

ADDITIONAL GRADING INFORMATION
Polish EXCELLENT
Symmetry EXCELLENT
Fluorescence NONE
Inscription(s) IGI LG702592511
Comments: HEARTS & ARROWS
This Laboratory Grown Diamond was created by Chemical Vapor Deposition (CVD) growth process. Type IIa



May 7, 2025
IGI Report No LG702592511
ROUND BRILLIANT
11.04 - 11.06 X 6.73 MM
5.01 CARATS
E
VS 2
IDEAL
60.9%
57%
Medium To Slightly Thick (Faceted)
Pointed
EXCELLENT
EXCELLENT
NONE
IGI LG702592511
Comments: HEARTS & ARROWS
This Laboratory Grown Diamond was created by Chemical Vapor Deposition (CVD) growth process. Type IIa

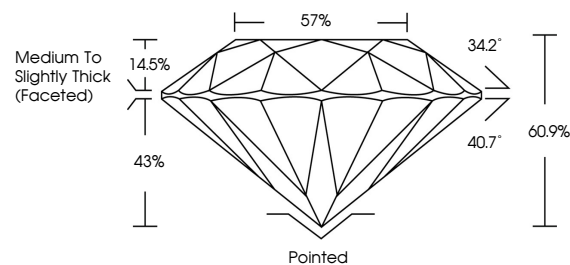
May 7, 2025
IGI Report Number LG702592511
Description LABORATORY GROWN DIAMOND
Shape and Cutting Style ROUND BRILLIANT
Measurements 11.04 - 11.06 X 6.73 MM

GRADING RESULTS
Carat Weight 5.01 CARATS
Color Grade E
Clarity Grade VS 2
Cut Grade IDEAL

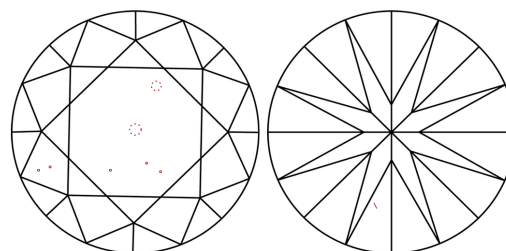
ADDITIONAL GRADING INFORMATION
Polish EXCELLENT
Symmetry EXCELLENT
Fluorescence NONE
Inscription(s) IGI LG702592511

Comments: HEARTS & ARROWS
This Laboratory Grown Diamond was created by Chemical Vapor Deposition (CVD) growth process. Type IIa

PROPORTIONS



CLARITY CHARACTERISTICS



KEY TO SYMBOLS

Red symbols indicate internal characteristics.
Green symbols indicate external characteristics.



COLOR

D E F G H I J Faint Very Light Light

CLARITY

IF VS 1-2 VS 1-2 SI 1-2 I 1-3
Internally Flawless Very Very Slightly Included Very Slightly Included Slightly Included Included

