

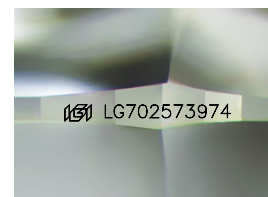
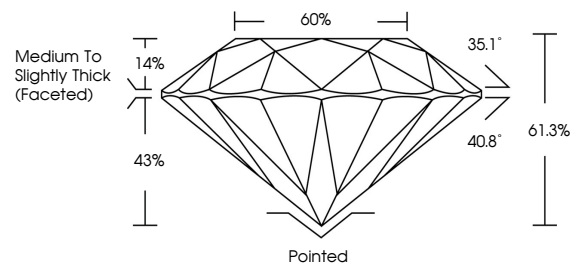


ELECTRONIC COPY

LABORATORY GROWN DIAMOND REPORT

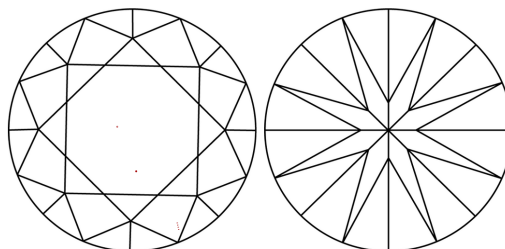
LG702573974
Report verification at igi.org

PROPORTIONS



Sample Image Used

CLARITY CHARACTERISTICS



KEY TO SYMBOLS

Red symbols indicate internal characteristics.
Green symbols indicate external characteristics.

COLOR

D E F G H I J Faint Very Light Light

CLARITY

IF WS¹⁻² VS¹⁻² SI¹⁻² |¹⁻³

Internally Flawless	Very Very Slightly Included	Very Slightly Included	Slightly Included	Included
------------------------	--------------------------------	---------------------------	----------------------	----------



© IGI 2020, International Gemological Institute

FD - 10 20

www.igi.org

LABORATORY GROWN DIAMOND REPORT



May 3, 2025

IGI Report Number **LG702573974**Description **LABORATORY GROWN DIAMOND**Shape and Cutting Style **ROUND BRILLIANT**

Measurements	8.71 - 8.76 X 5.35 MM
--------------	-----------------------

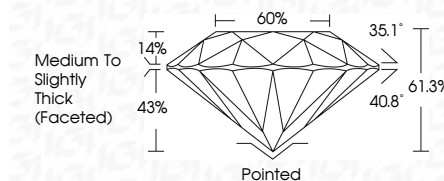
GRADING RESULTS

Carat Weight **2.54 CARATS**

Color Grade E

Clarity Grade VS 1

Cut Grade **IDEAL**



ADDITIONAL GRADING INFORMATION

Polish **EXCELLENT**Symmetry **EXCELLENT**Fluorescence NONInscription(s) LG702573974

Comments: This Laboratory Grown Diamond was created by Chemical Vapor Deposition (CVD) growth process.
Type IIa



May 3, 2025	GL Report No. LG70257974	ROUND BRILLIANT	2.54 CARATS	E	VS 1	IDEAL	61.3%	60%	Medium to Slightly Thick (Faceted)	Pointed	Excellent	Excellent	NONE	lg9 LG70257974	Comments: The Laboratory Grown Diamond was certified for chemical, physical, and optical properties consistent with a natural type IIA.
			7.1 - 8.6 X 6.35 MM	Carat Weight	Color Grade	Clarity Grade	Depth	Table	Girdle	Culet	Polish	Symmetry	Fluorescence	Inscriptions(s)	